



Gensler

Gavilan College

San Benito County Campus Center (SBCC)

GAVILAN PRESENTATION • MARCH 29, 2023



Agenda

Welcome & Introductions

Workgroup Charge

Project Background & Updates

Design Overview

Sewer Update

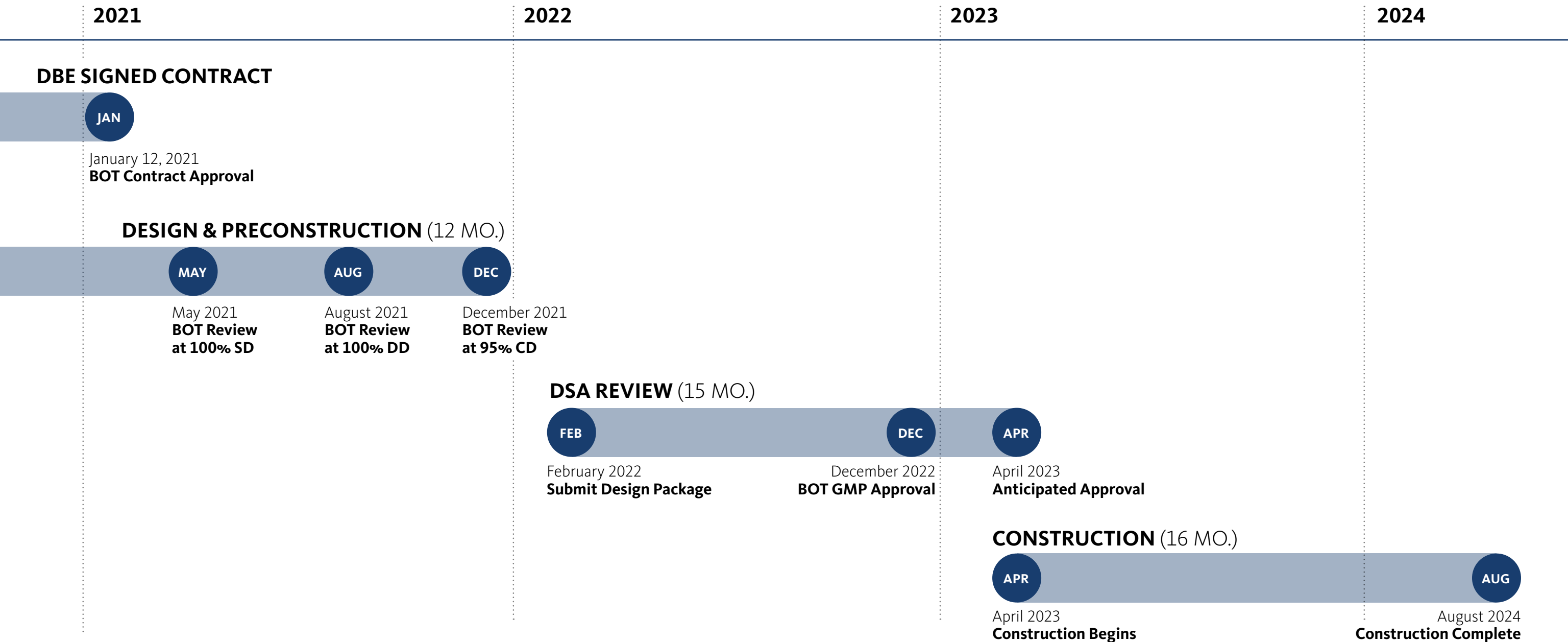
Future Agenda Items

Engage Empower Enrich

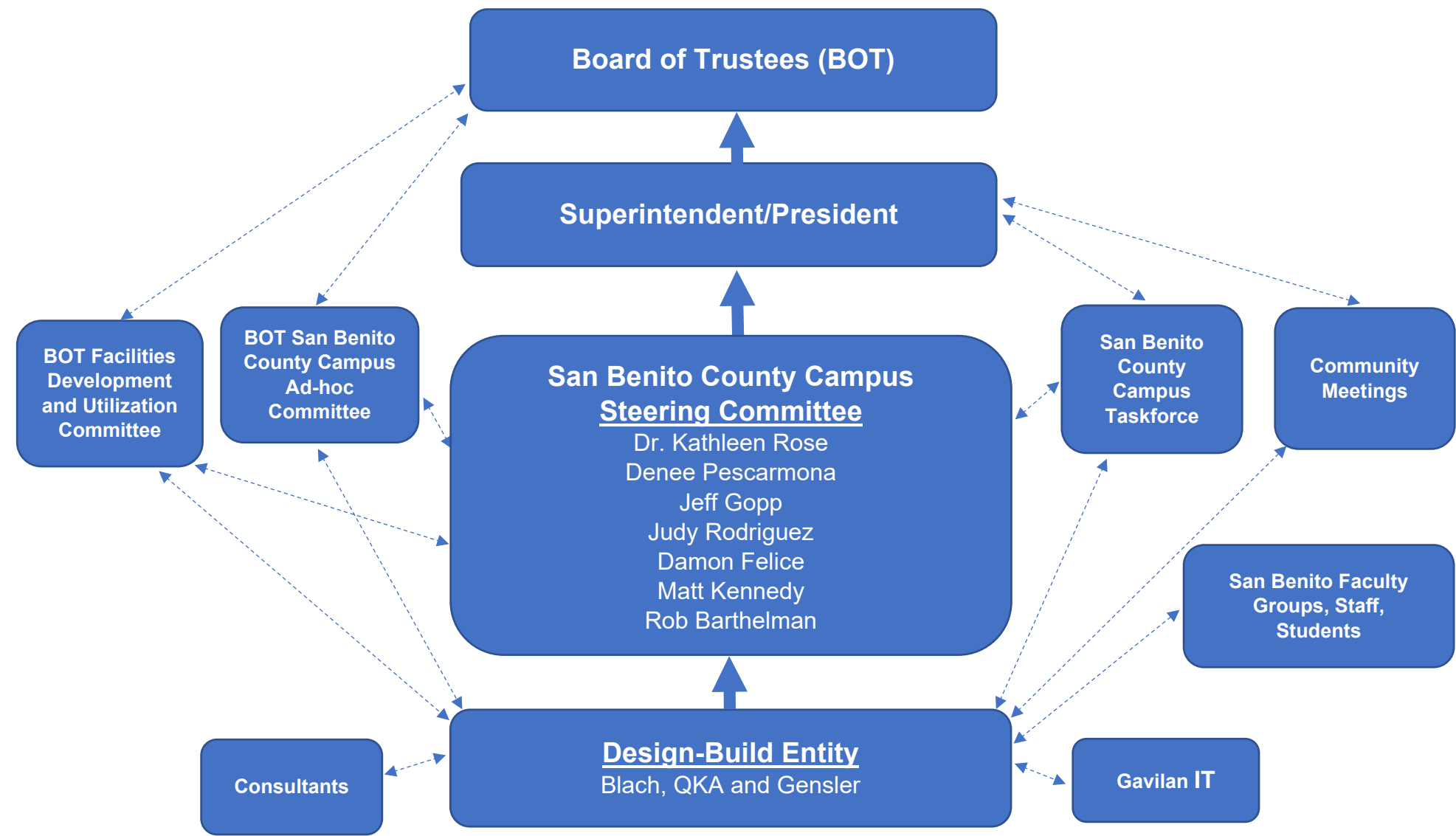


Gavilan College actively engages, empowers and enriches students of all backgrounds and abilities to build their full academic, social, and economic potential.

Schedule at a Glance



Decision Making Diagram



Legend:
➡ Decision Making
↔ Communication/Information

San Benito County Campus Center

HOLLISTER, CA

A new campus & the first building

- Student Services
- Community Programs
- General + Lab Classrooms

Completion: 2024

33,000 GSF

78 acres

\$34 M

Services Provided

Design Architect

Partners

QKA – AOR

Blach – Construction



District Design Guidelines

FOUNDATIONAL DESIGN OBJECTIVES:

- **Sustainability** – performance should be a primary aesthetic consideration
- **Equity** – respect for all cultures, beliefs, and personal characteristics
- **Campus Identity** – envisioned identity and connection to the community
- **Maintenance and Security** – priority and concerns

Project Guiding Principles

THE SBCC CAMPUS WILL:

- Welcome the community
- Create an exceptional and collegiate student experience
- Facilitate student connections to services and support
- Provide highly functional, flexible spaces that encourage learning and collaboration
- Promote wellness and safety
- Connect and interact with the landscape
- Be durable and easy to maintain

Guided Pathways

TO HOLISTICALLY SUPPORT STUDENTS IN ACHIEVING THEIR COLLEGE COMPLETION GOALS

Guided Pathways is a movement that seeks to streamline a student's journey through college by providing structured choice, revamped support, and clear learning outcomes—ultimately helping more students achieve their college goals.

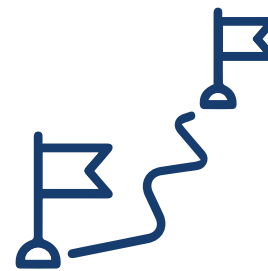
The reform recognizes that the current self-service model of community colleges leads many students to unintended dead ends or unforeseen detours in the form of excess or out-of-sequence credit.



1.
Clarify pathways
to end goals



2.
Help students choose
and enter pathways



3.
Help students stay
on their path



4.
Ensure students
are learning

Location of the San Benito County Campus

Acreage: 78



PINNACLES



LANDSCAPE



SITE LOCATION

GAVILAN COLLEGE – SBCC

FAIRVIEW RD. CITY OF HOLLISTER

Site Details

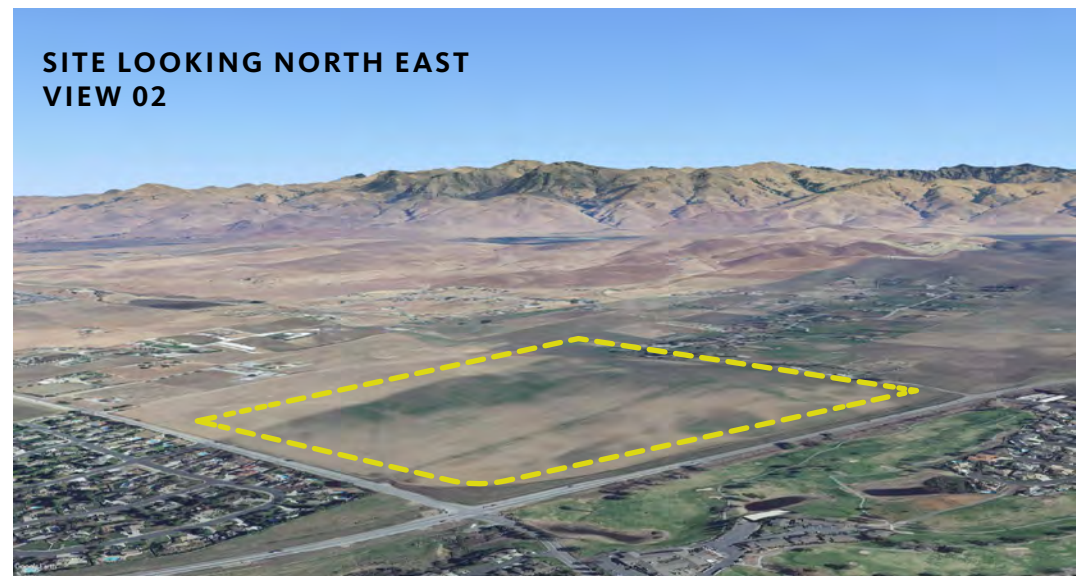


GAVILAN PRESENTATION • MARCH 29, 2023

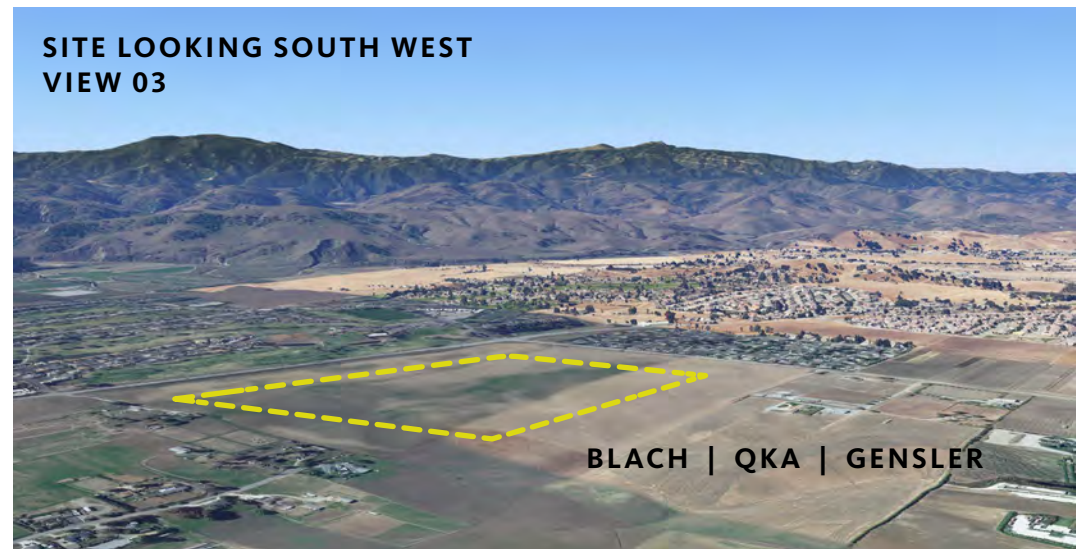
SITE AT INTERSECTION OF FAIRVIEW RD. + AIRLINE HWY.
VIEW 01



SITE LOOKING NORTH EAST
VIEW 02

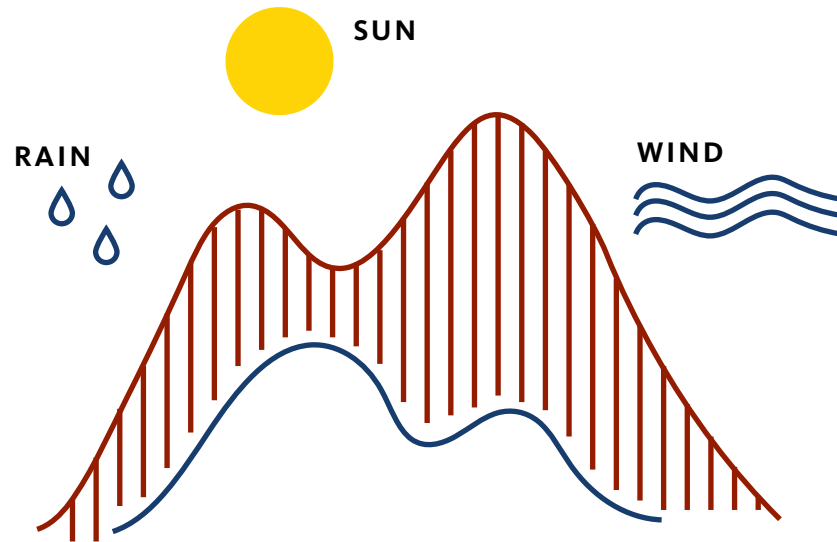


SITE LOOKING SOUTH WEST
VIEW 03

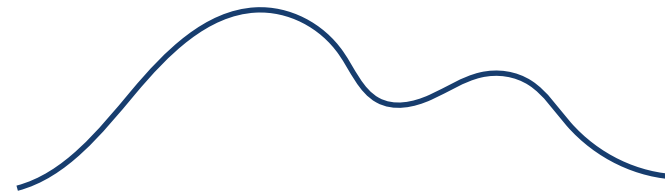


BLACH | QKA | GENSLER

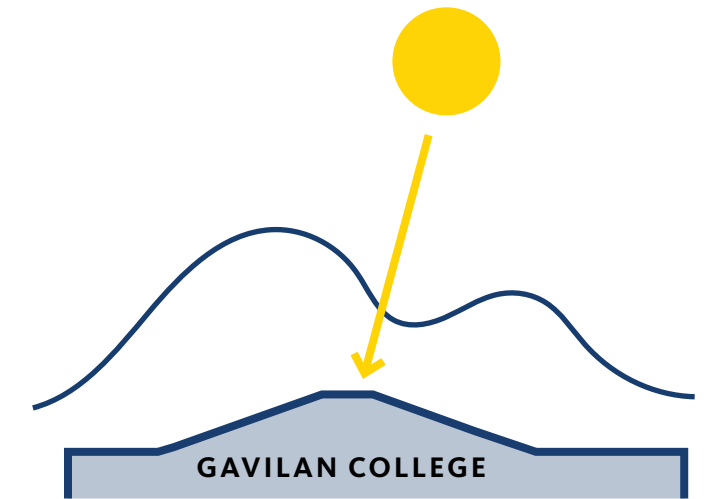
Welcoming the Community



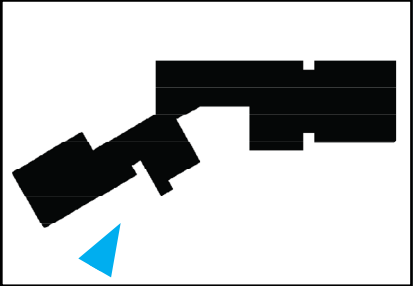
1. Sun, wind and rain have eroded the landscape for millions of years forming foothills from mountains and creating fertile agricultural land.



2. The foothills of today form a recognizable backdrop to the Gavilan College San Benito County site.



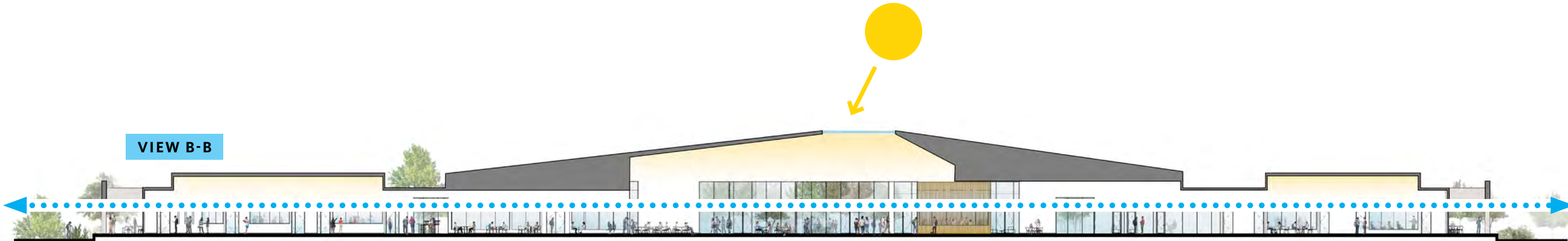
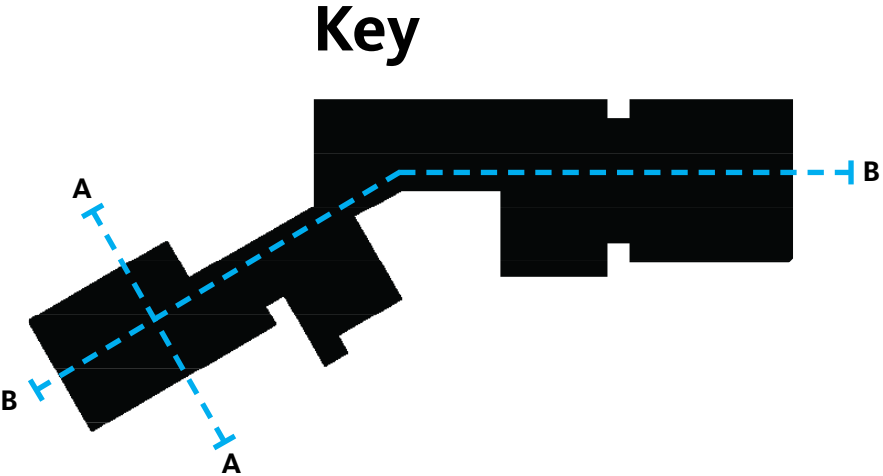
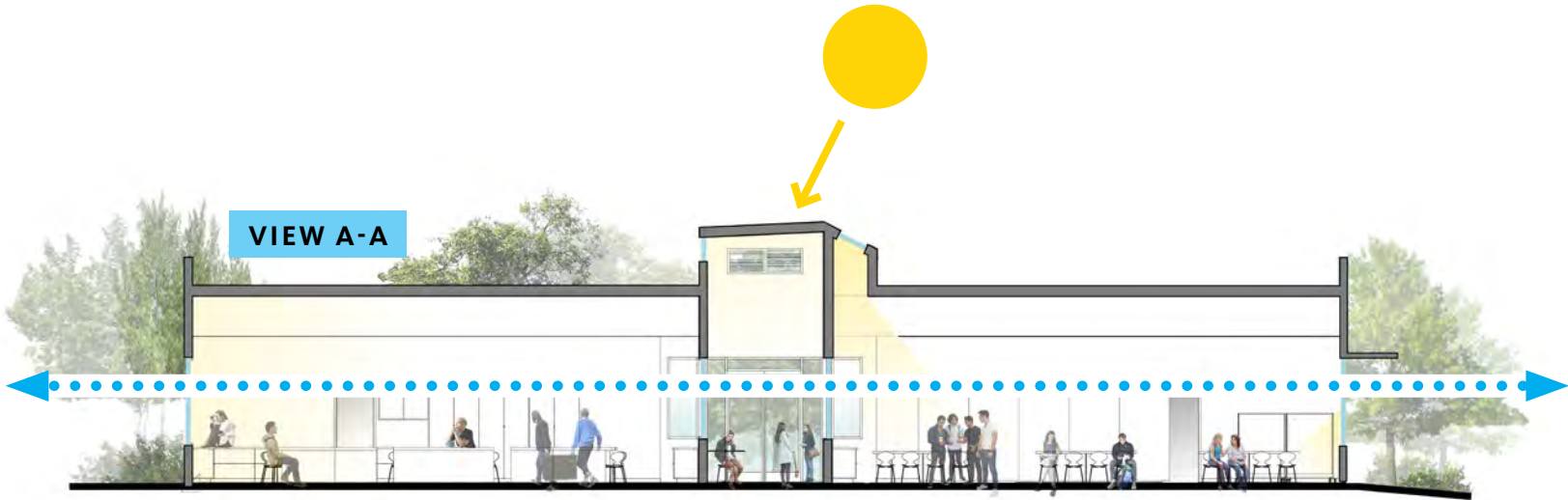
3. Echoing the foothills, the San Benito County Campus Center building is a visible beacon to the community in harmony with its natural environment.



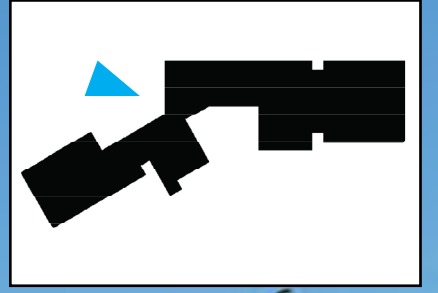
Facilitate Connections



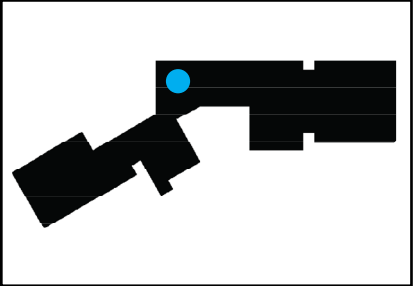
Connect with Nature



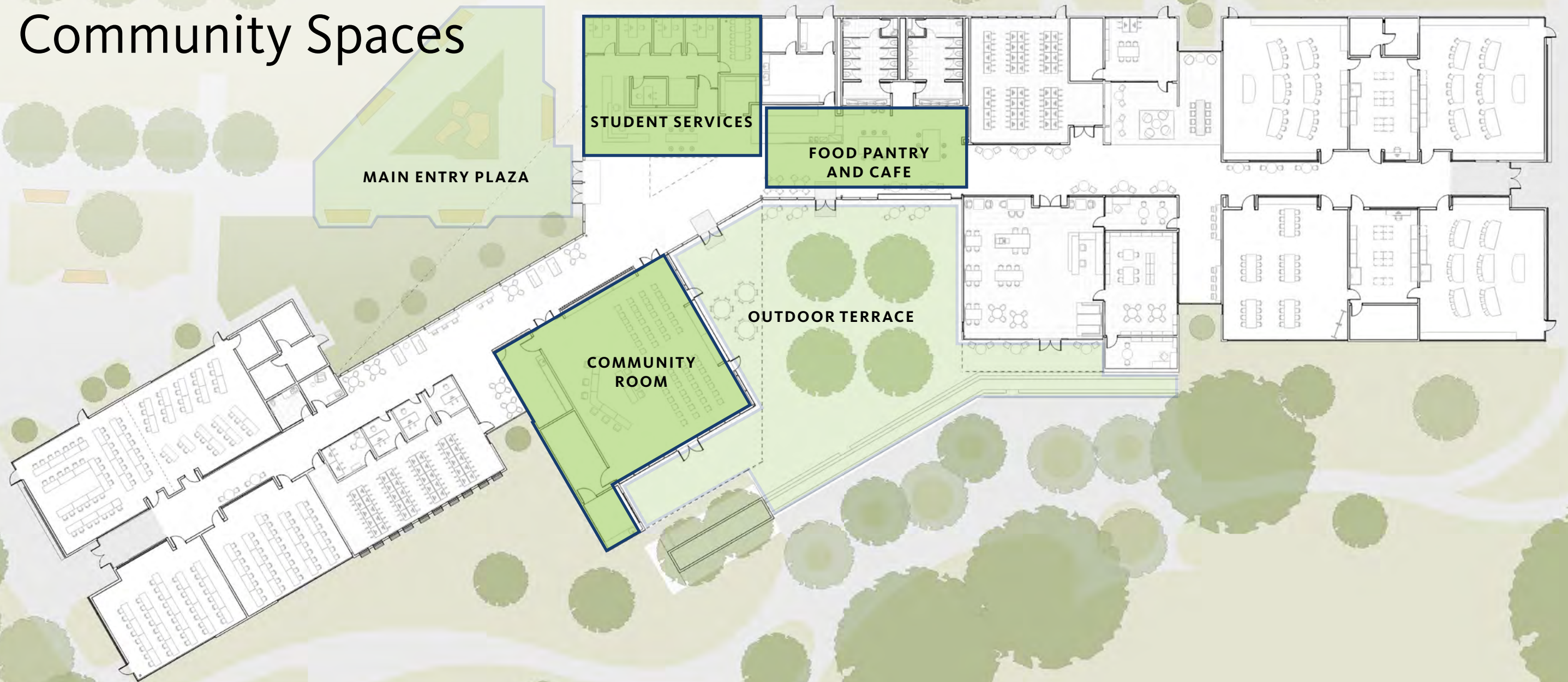
Welcome!



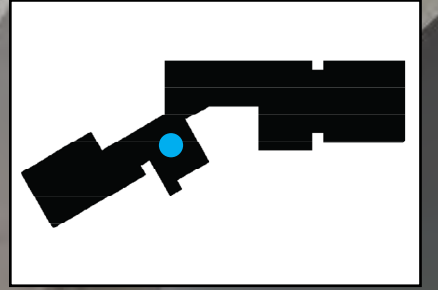
The Hub



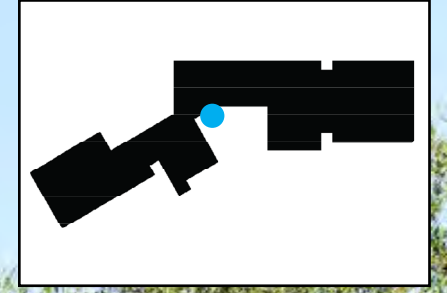
Functional and Flexible Community Spaces



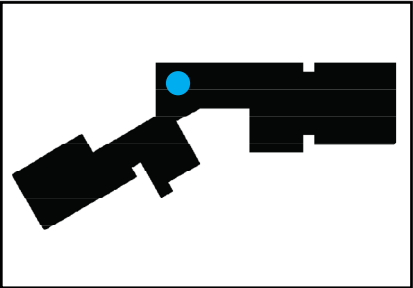
Community Room



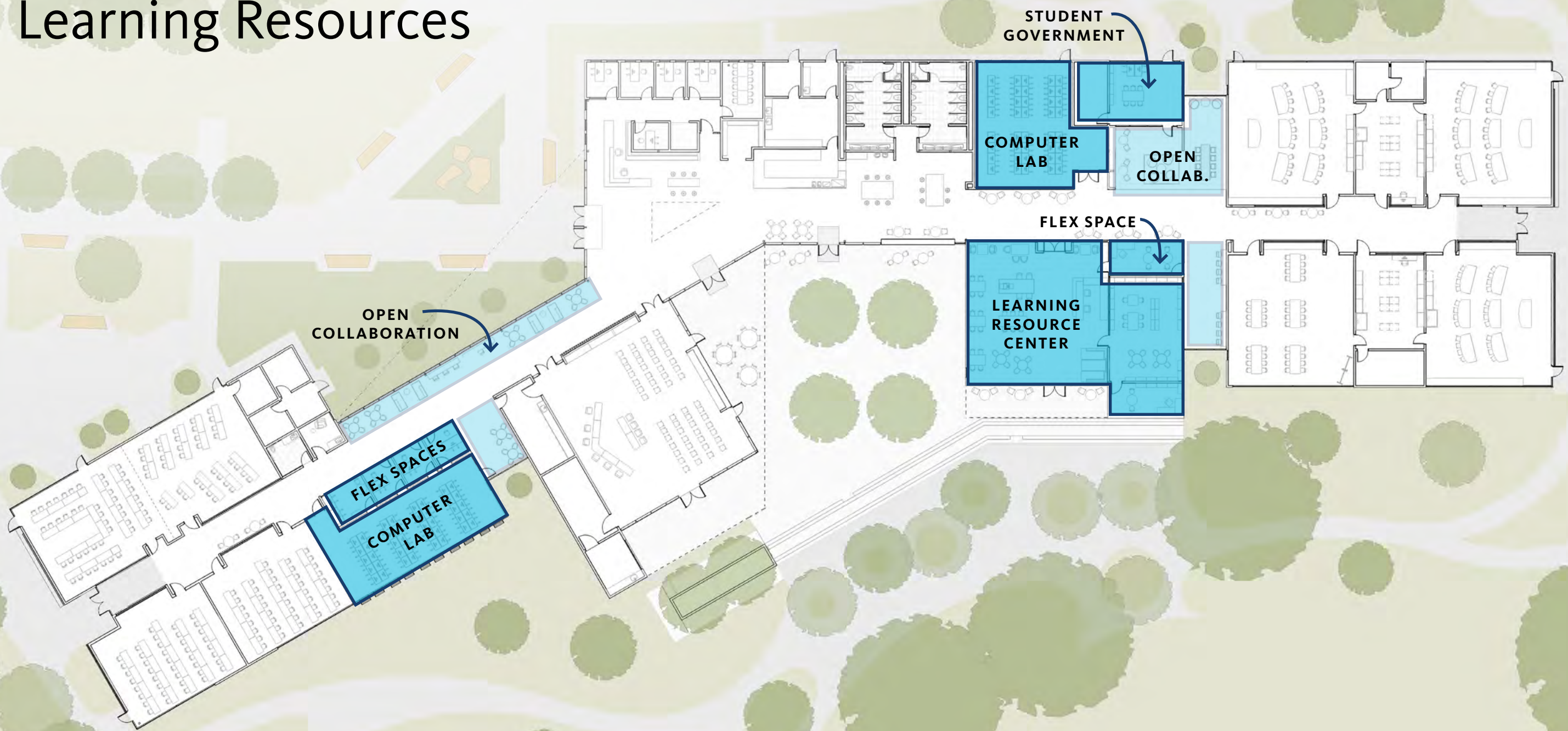
Outdoor Terrace



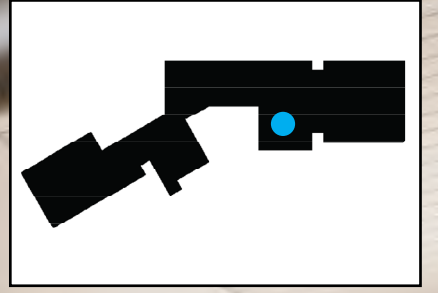
Food Pantry and Cafe



Learning Resources



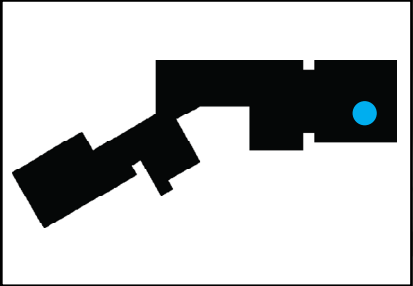
Learning Resource Center



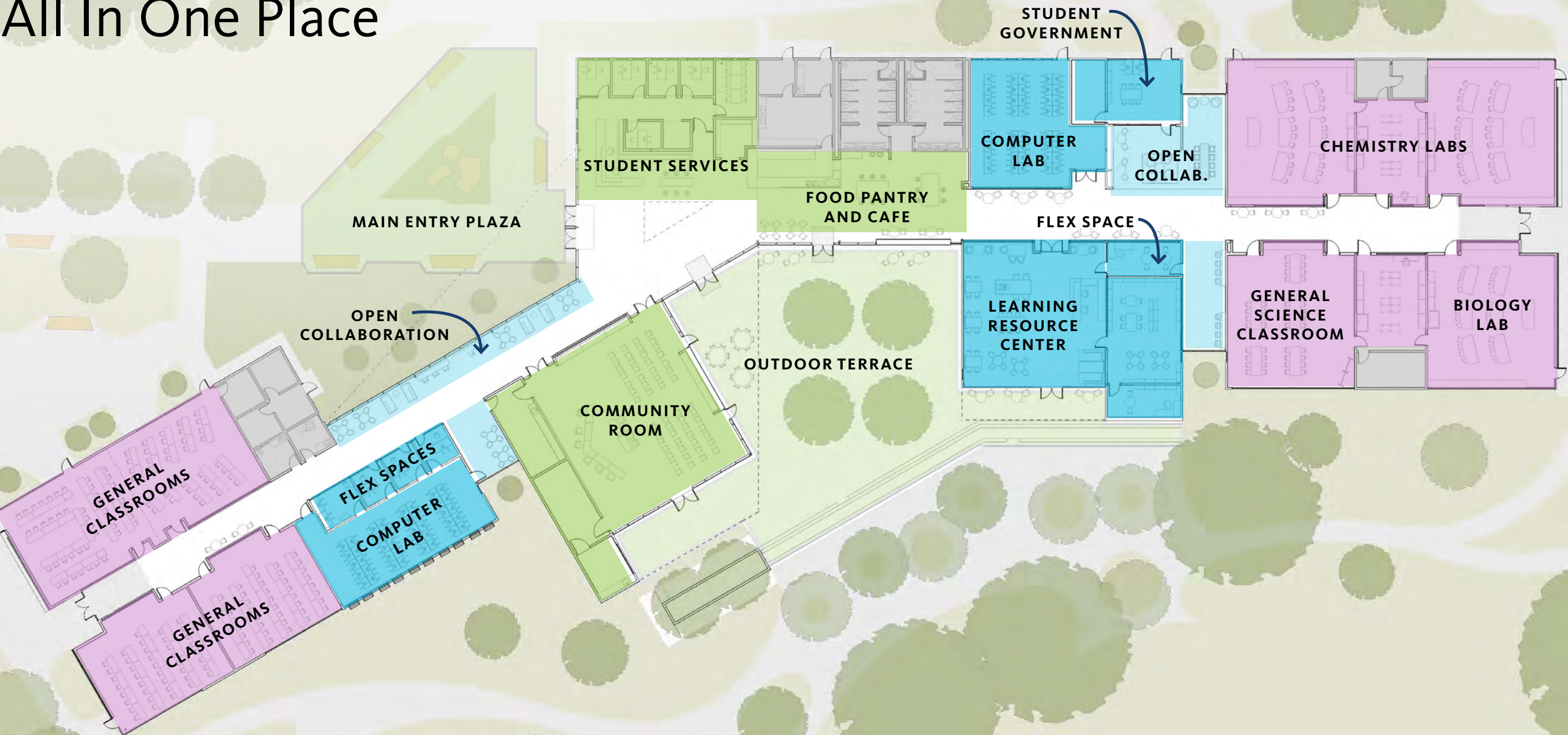
Science Labs and Classrooms



Science Labs

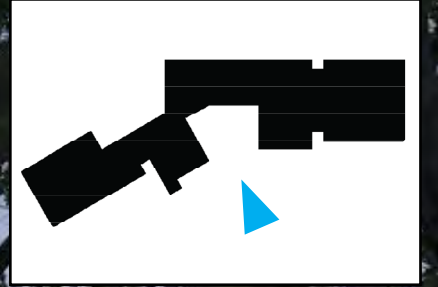


All In One Place



GAVILAN COLLEGE – SBCC

A Building for the Entire Community



GAVILAN PRESENTATION • MARCH 29, 2023

BLACH | QKA | GENSLER



GAVILAN COLLEGE – SAN BENITO COUNTY CAMPUS CENTER

THANK YOU