

An architectural rendering of the Gavilan College San Benito County Campus Center (SBCC) at dusk. The building is a long, low-profile structure with a mix of light-colored walls and dark, textured panels. It is situated on a hillside covered in tall grass and wildflowers. In the background, rolling hills and mountains are visible under a clear sky with a few birds flying. The moon is visible in the upper left corner.

Gensler

# Gavilan College

## San Benito County Campus Center (SBCC)

GAVILAN PRESENTATION • SEPTEMBER 2023



# Agenda

Display Case & Murals

Exterior Finishes

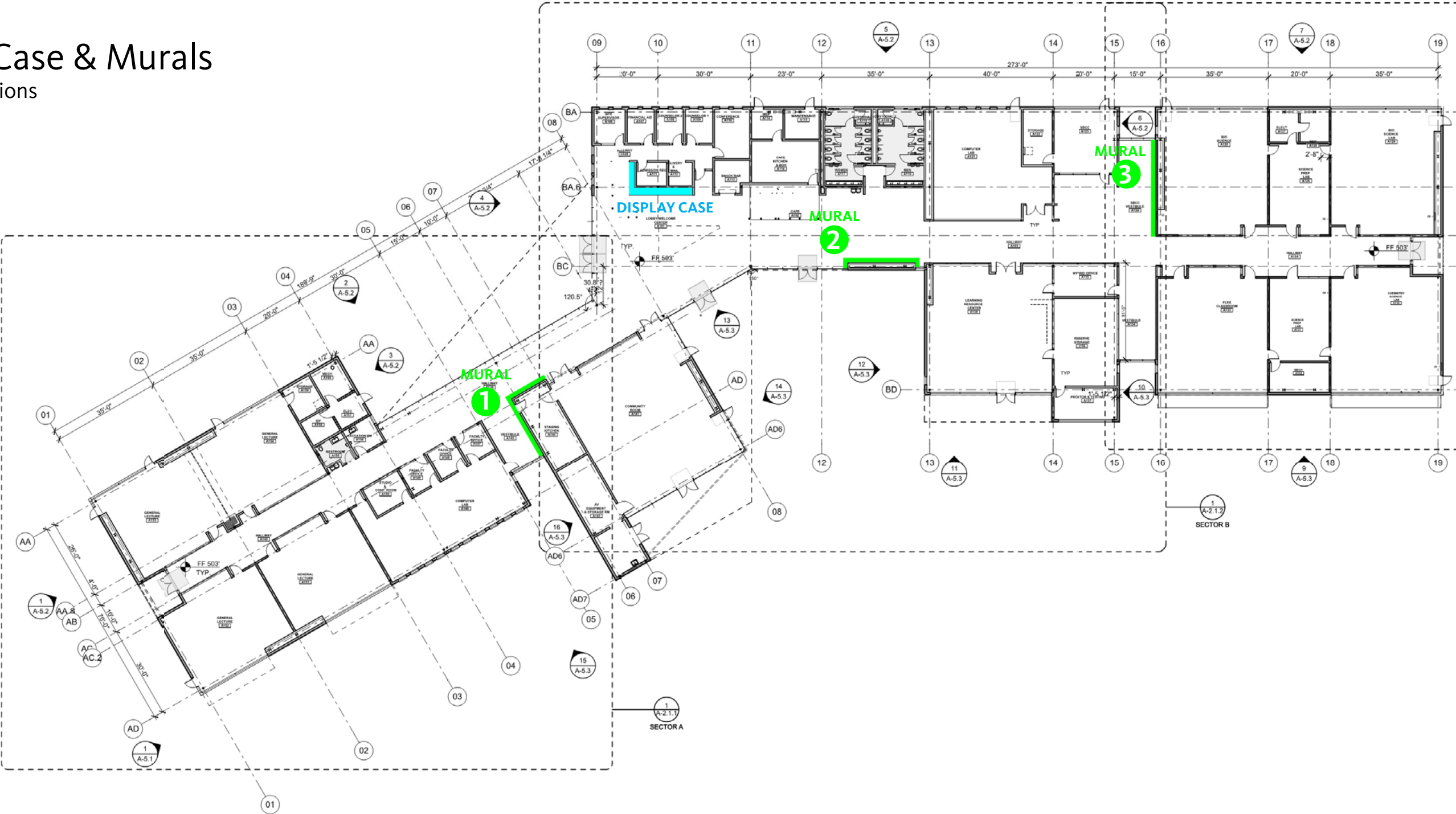
Interior Finishes

Classroom Technology

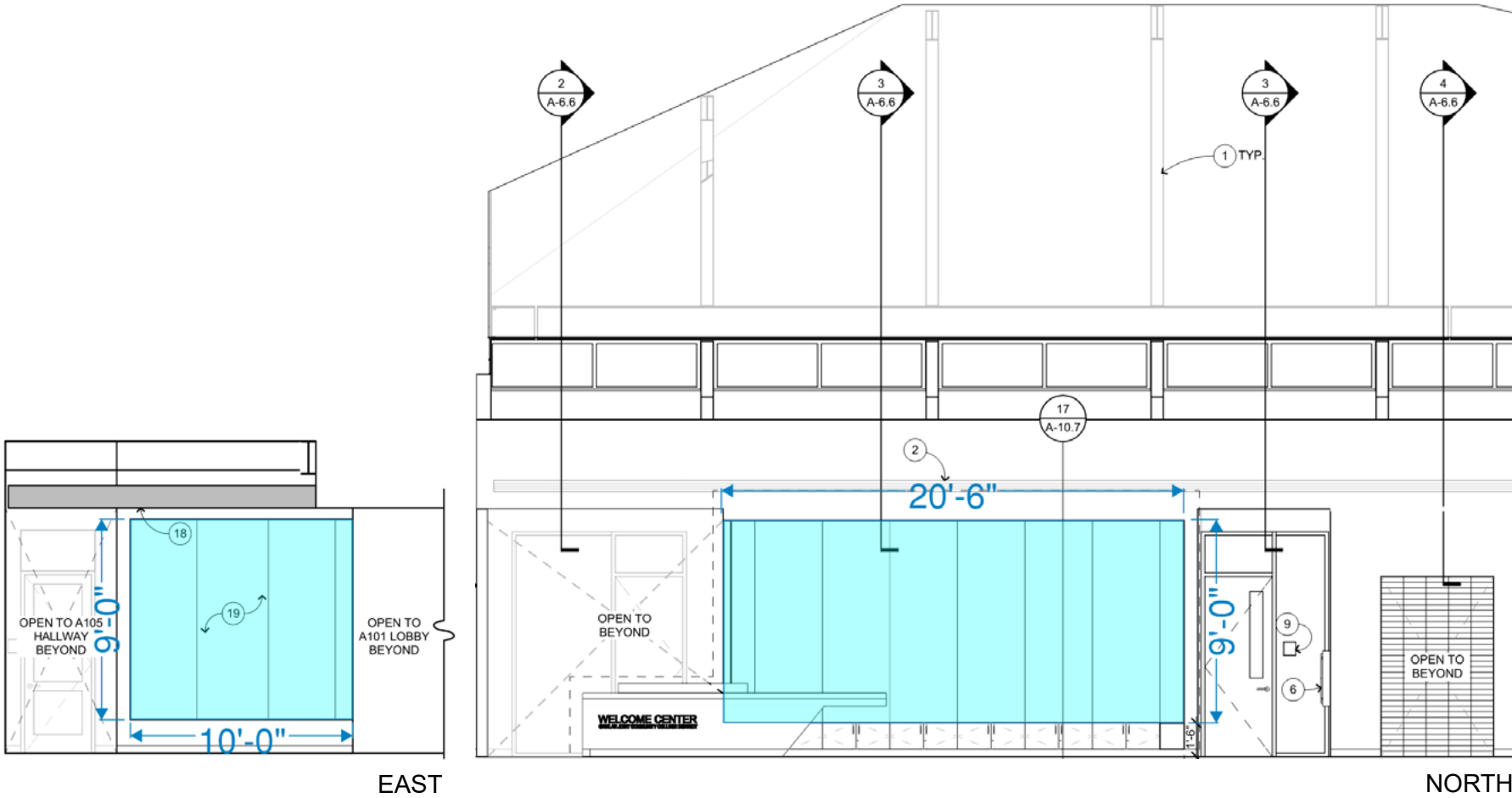
Kitchen

# Display Case & Murals

Possible Locations



Display Case

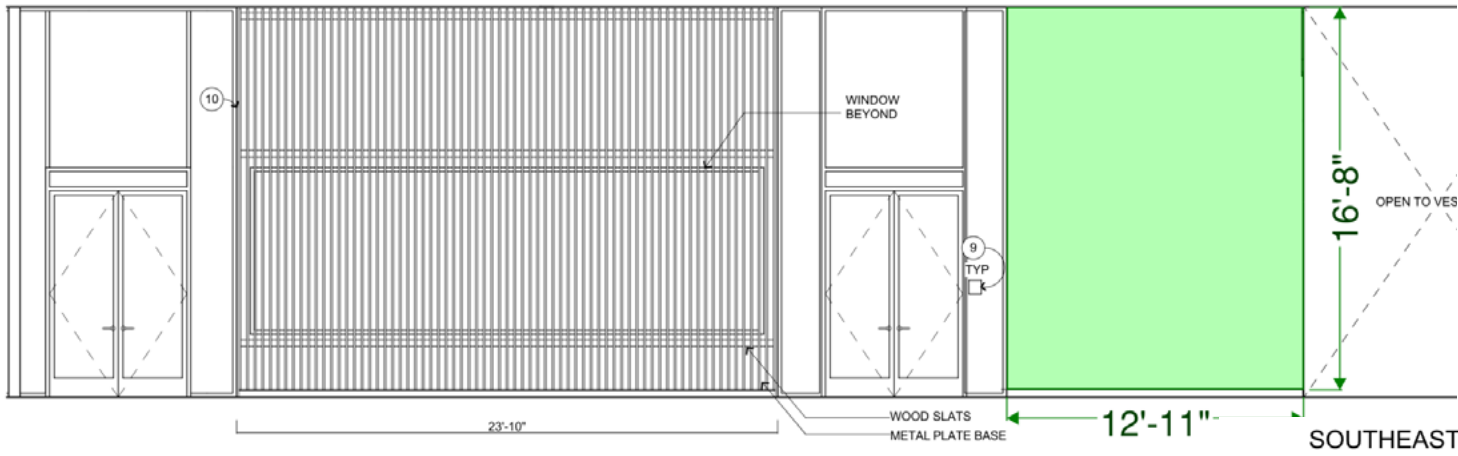




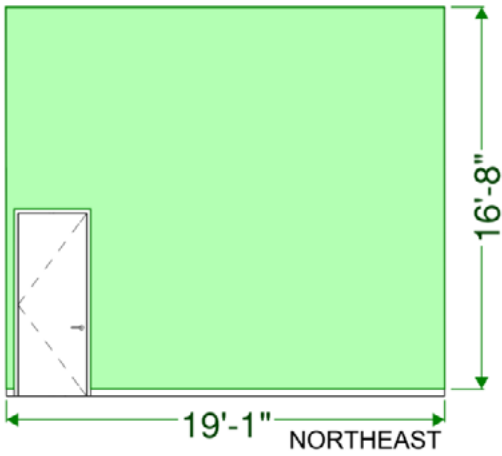
# Murals

Elevations at Possible Locations

1

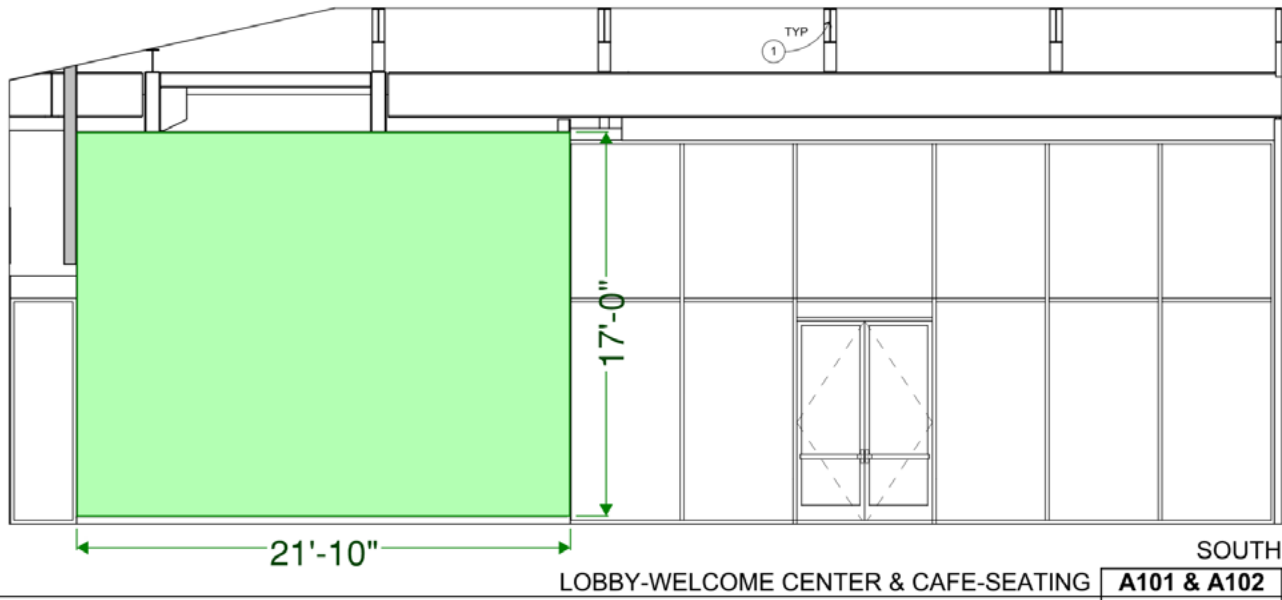


HALLWAY **A139**  
1/4" = 1'-0" **A-2.1.1**



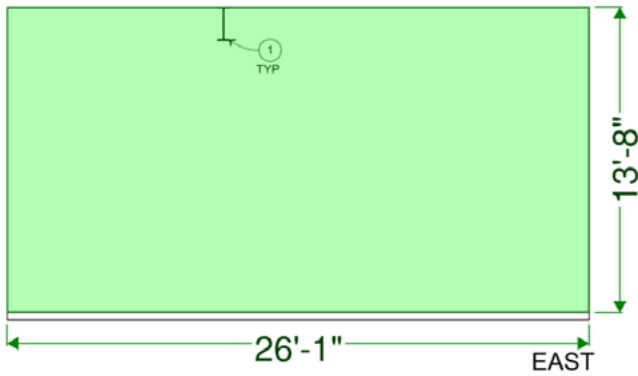
VESTIBULE **A145**  
1/4" = 1'-0" **A-2.1.1**

2



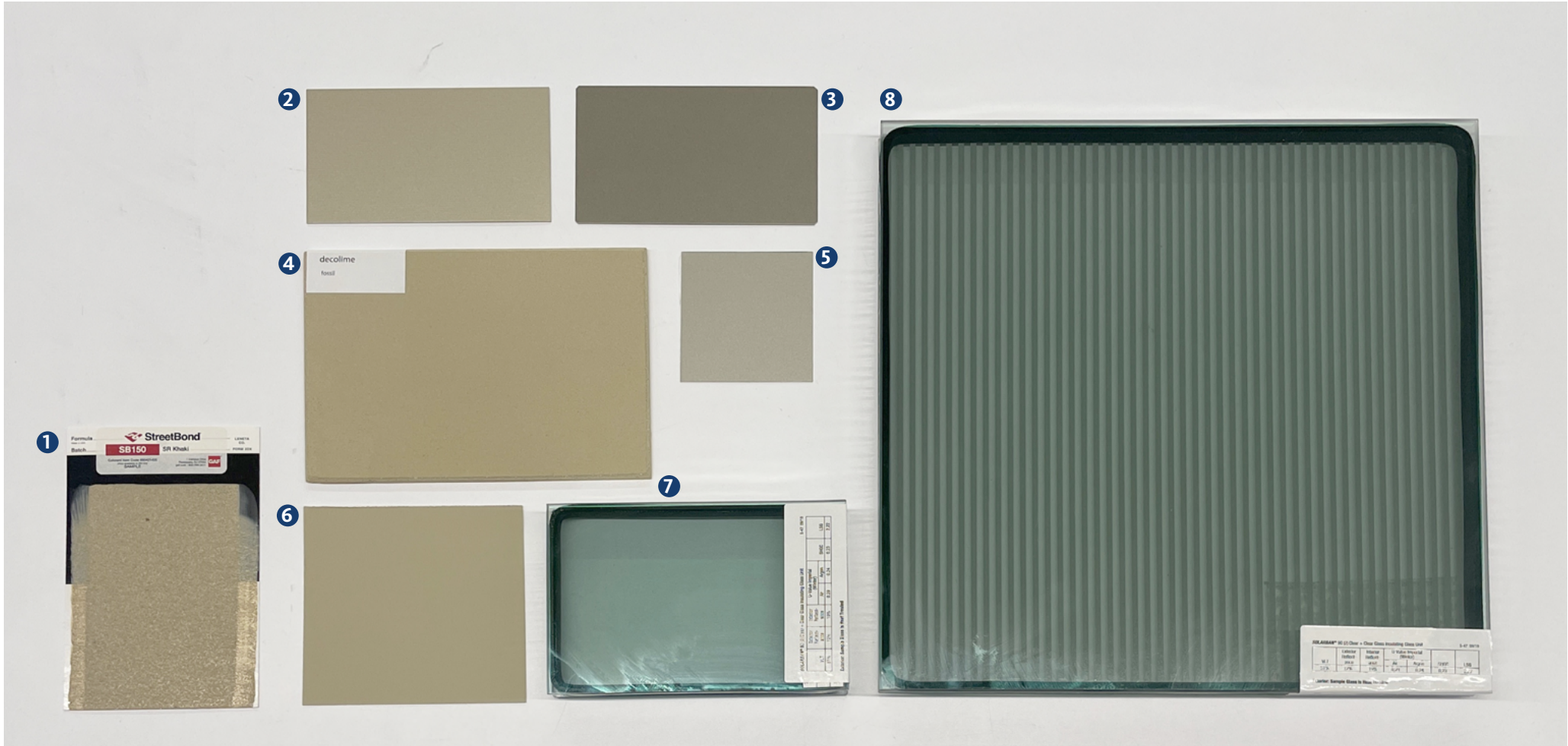
LOBBY-WELCOME CENTER & CAFE-SEATING **A101 & A102**  
1/4" = 1'-0" **A-2.1.2**

3



SBCC VESTIBULE **A124**  
1/4" = 1'-0" **A-2.1.2**

Exterior Finishes



1  
PAVEMENT COATING  
STREETBOND SB150  
SR KHAKI

2  
METAL ROOF  
IMETCO  
LIGHT BRONZE

3  
VERTICAL SUNSHADE  
CONSTRUCTION SPECIALTIES  
711 LIGHT BRONZE

4  
CEMENT PLASTER  
ECO STUCCO  
TUFFEAU 90

5  
HORIZONTAL SUNSHADE  
& OPENINGS  
KAWNEER  
ACRODIZE HARDCOAT  
CHAMPAGNE

6  
EXTERIOR PAINT  
DUNN EDWARDS  
DE6207 EGYPTIAN SAND

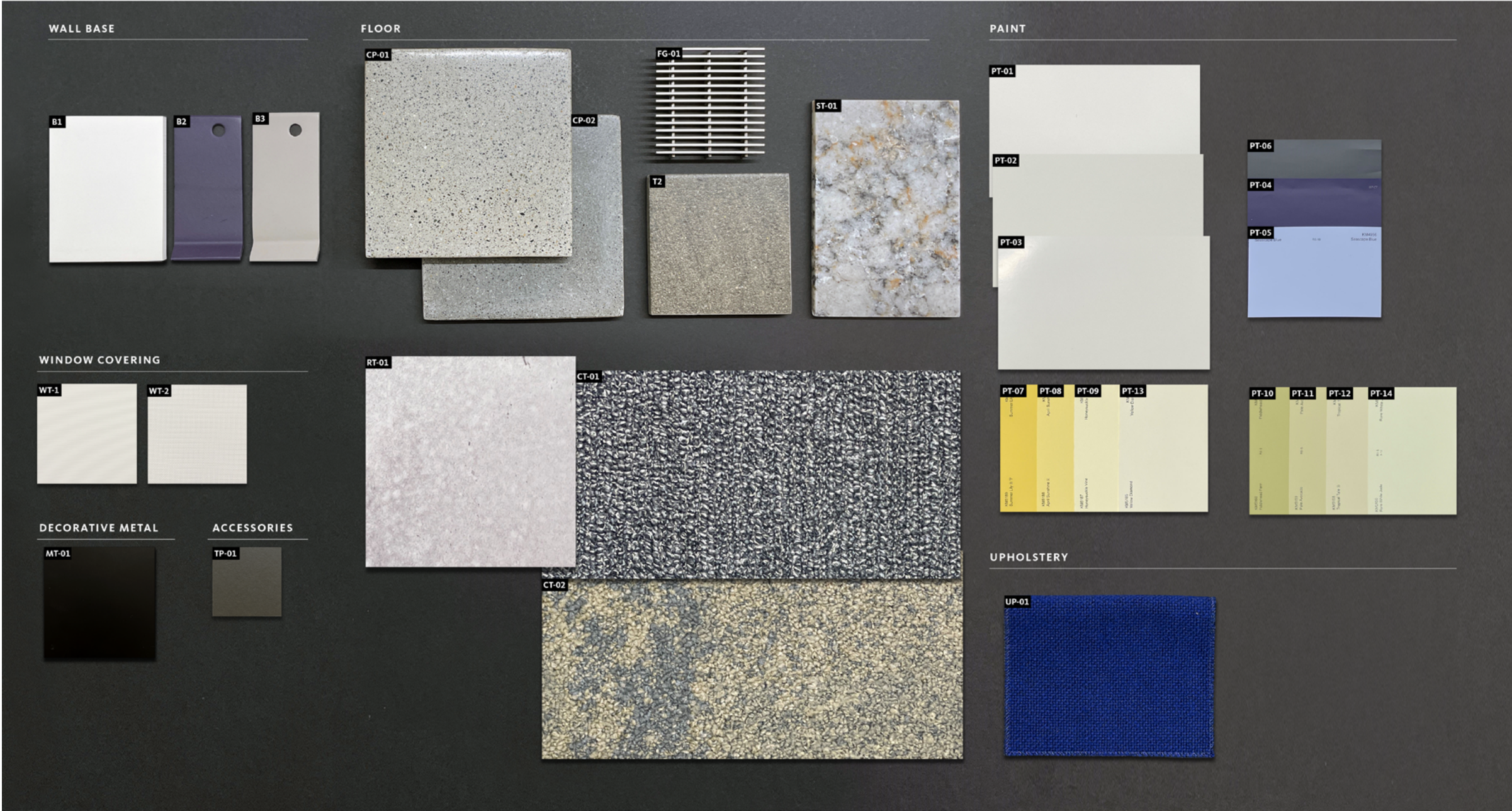
7  
TYP. EXTERIOR GLAZING  
VITRO  
SOLARBAN 90

8  
EXTERIOR GLAZING  
W/ FRIT PATTERN  
VITRO  
1/8" LINES, 50% COVERAGE  
WARM GRAY





# Interior Finishes





# Interior Finishes





What is the HyFlex Course Model?

How does the Hyflex work?

# Classroom Technology

Diagram





Why is Hyflex significant  
and where is it going?

What are the implications  
for teaching and learning?

