

# GJCCD DESIGN GUIDELINES

---

TASK FORCE MEETING  
JUNE 2, 2020

# TABLE OF CONTENTS

## 01

Overall Approach

## 02

Site Design Guidelines Development

## 03

Building Design Guidelines Development

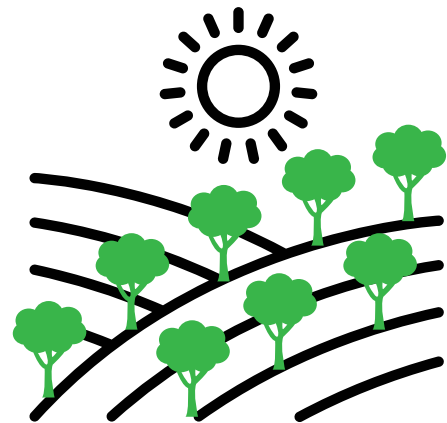
## 04

Design Guidelines Example Document

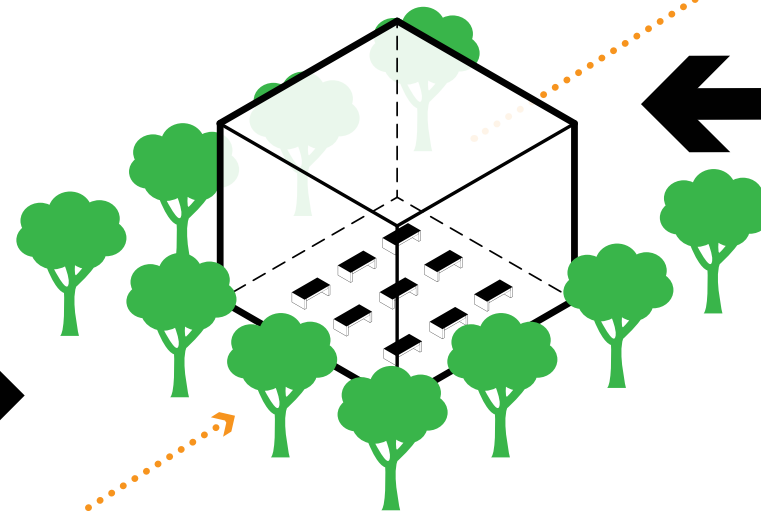
# OVERALL APPROACH

---

LOCAL  
VERNACULAR



MODERN  
INTERIOR

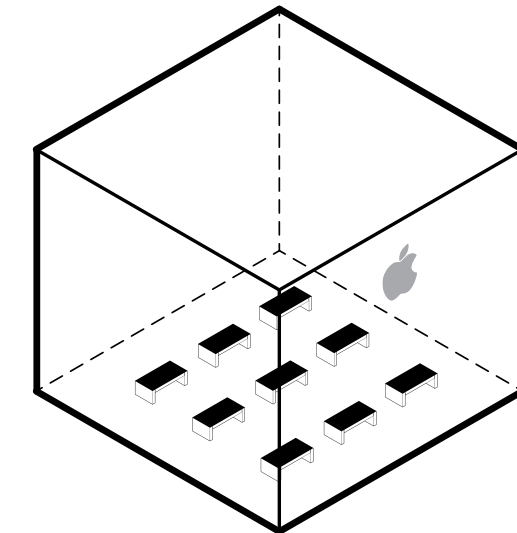


FAMILIAR  
SHELL

STUDENT



TRANSFORMED  
CITIZEN



MODERN PROGRAM

## Design Guidelines Goals

Cohesive Campus Identity

Establish a Sense of Place

Promote Students' Pride + Success



Math and Physical Science Courtyard



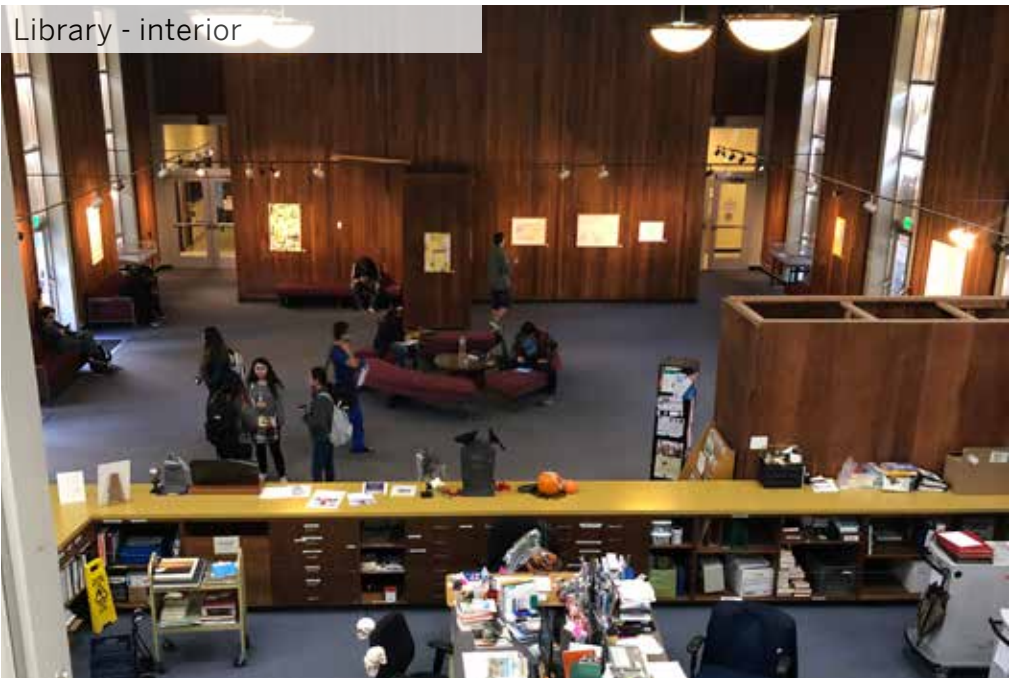
Library Building



Student Center/Administration



Library - interior



Humanities Building



Health Occupations Building



**Gilroy Campus:** Existing Campus Palette



Pinnacles National Park



Mission San Juan Bautista



Tres Pinos



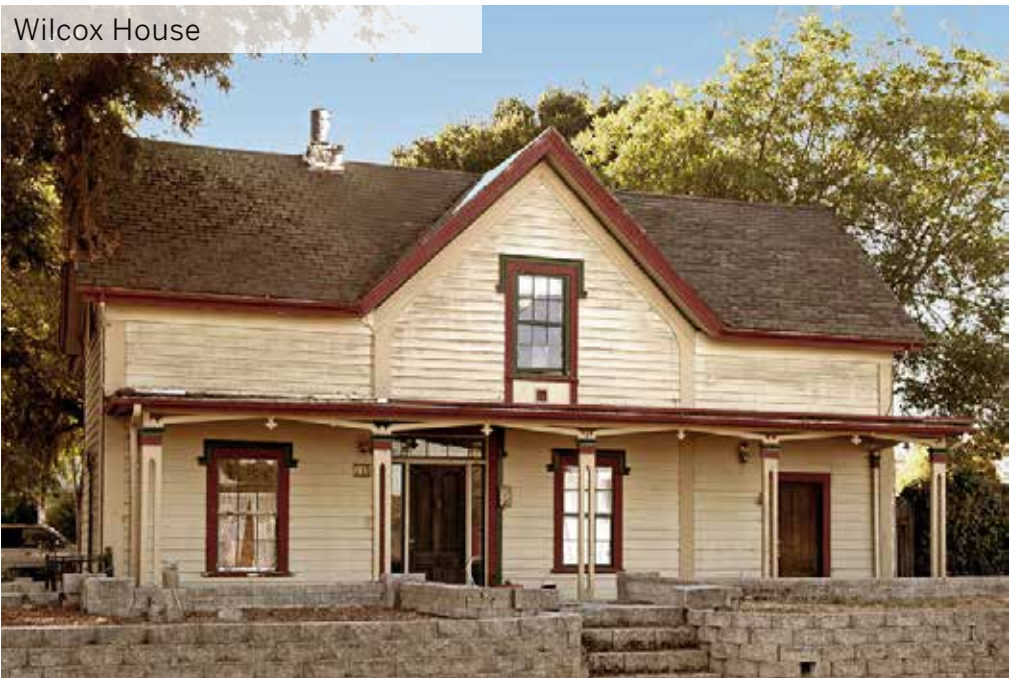
Apricot farms



De Anza House



Wilcox House



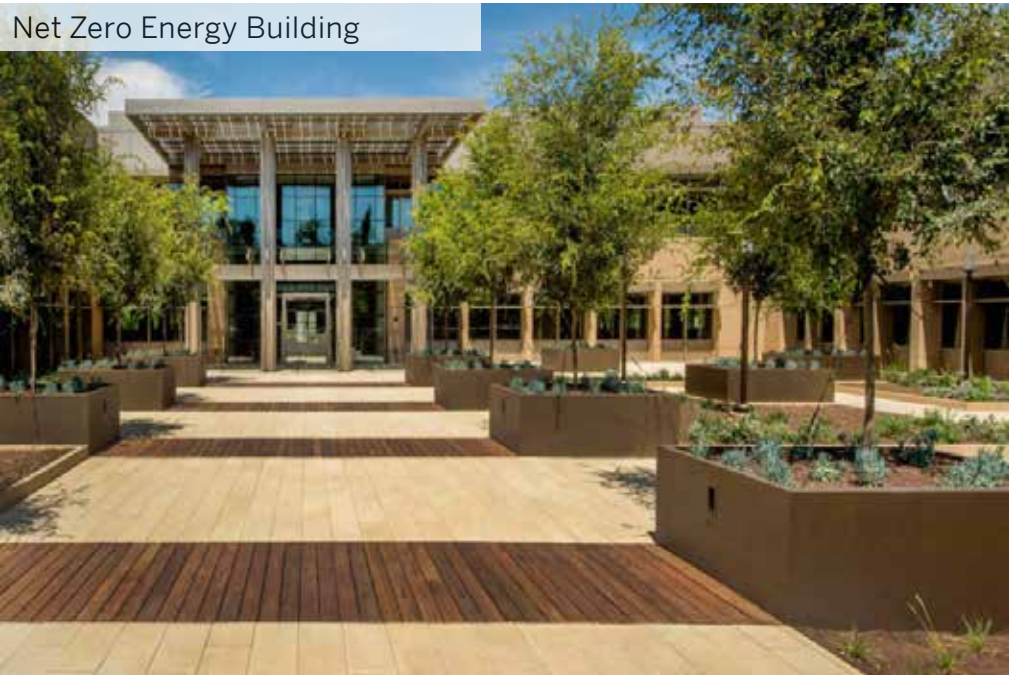
San Benito County Campus: Local Vernacular



Guadalupe River Trail



Net Zero Energy Building



Apple Store



GoDaddy Office



Tesla Solar Panel Factory



Transbay Transit Center



# The Region



# **SITE DESIGN GUIDELINES DEVELOPMENT**

---





**Gilroy Campus.** 2019 Facilities Master Plan Update



**San Benito County Campus.** 2019 Facilities Master Plan Update - DRAFT

# Site Design Guidelines

- Signage/Wayfinding
- Circulation
- Landscape



- Monumental signage increases visibility and should be placed at perimeter streets
- Tall walls and building facades signage create arrival experience and should be placed on special buildings location
- Directories should be placed at pedestrian entrances and major hubs to orient visitor on arrival.
- Directional signage should be placed at decision points to reinforce the path of travel.



## Signage/Wayfinding Guidelines





## Wayfinding Strategy

Campus Identity

Pedestrian Wayfinding

- Monument signage
- Directories
- Placemaking
- Directional





## Wayfinding Strategy

Campus Identity

Pedestrian Wayfinding

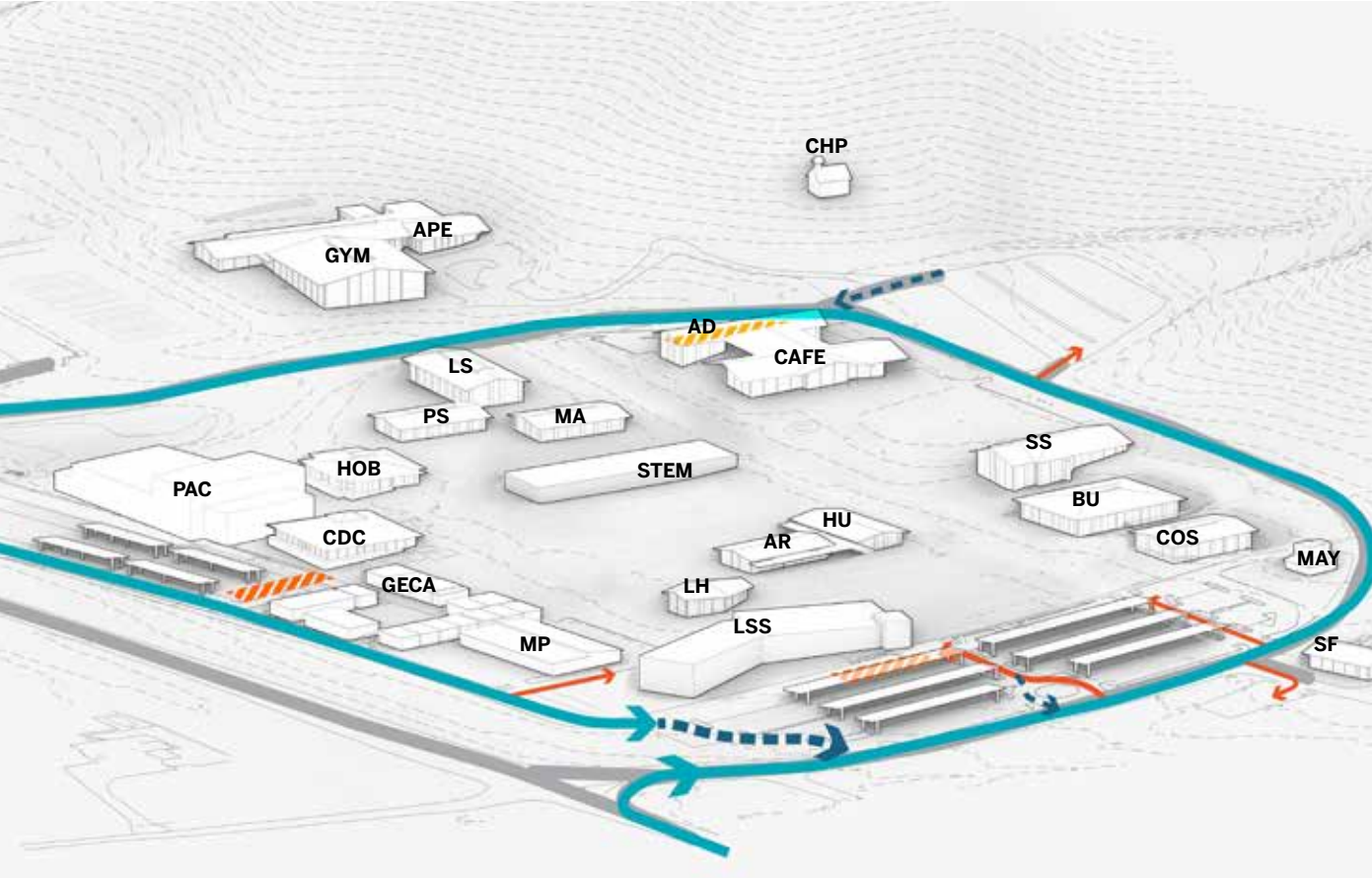
- Campus Identification
- Monument signage
- Directories
- Placemaking
- Directional



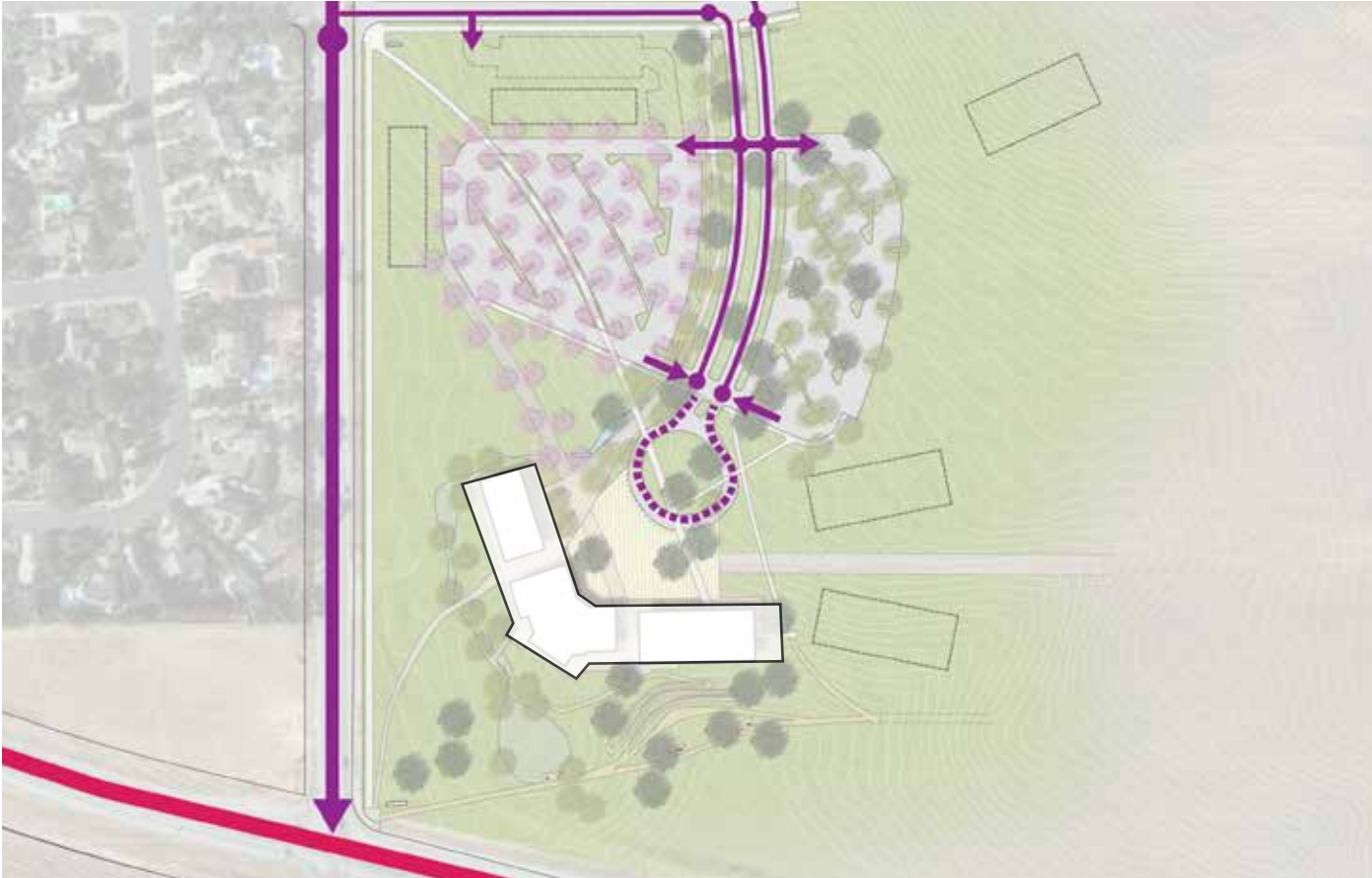
- Define clear pedestrian and vehicular circulation
- Provide accessible drop-offs adjacent to major pedestrian circulation
- Emphasize a central point of entry
- Introduce traffic calming devices where appropriate

## Circulation





Gilroy Campus. 2019 Facilities Master Plan Update



San Benito County Campus. 2019 Facilities Master Plan Update - DRAFT

Site Design Guidelines

Circulation

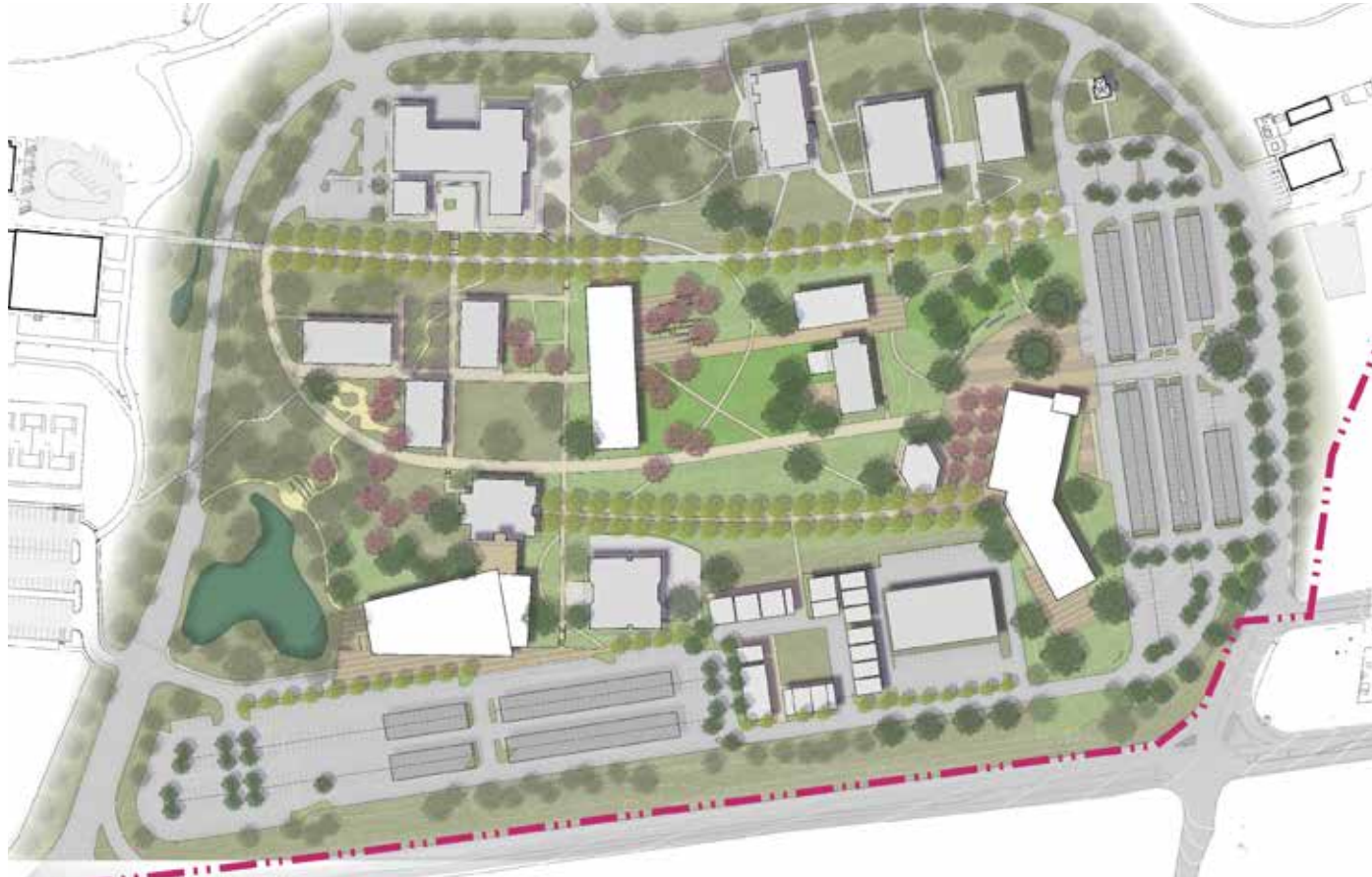


- A consistent vocabulary of design and materials will help unify the campus.
- Quads should accommodate a variety of programmed and spontaneous activities
- Provide shaded gathering and private areas throughout the campus
- Shade trees, thoughtful landscaping and benches to create attractive pathways and corridors.
- Provide benches to encourage opportunities for respite and campus interactions.
- Integrate stormwater infrastructure
- Consider Allees of trees for shading and wayfinding

## Landscape Design Guidelines







**Gilroy Campus.** 2019 Facilities Master Plan Update



**San Benito County Campus.** 2019 Facilities Master Plan Update - DRAFT

## Landscape Design Guidelines

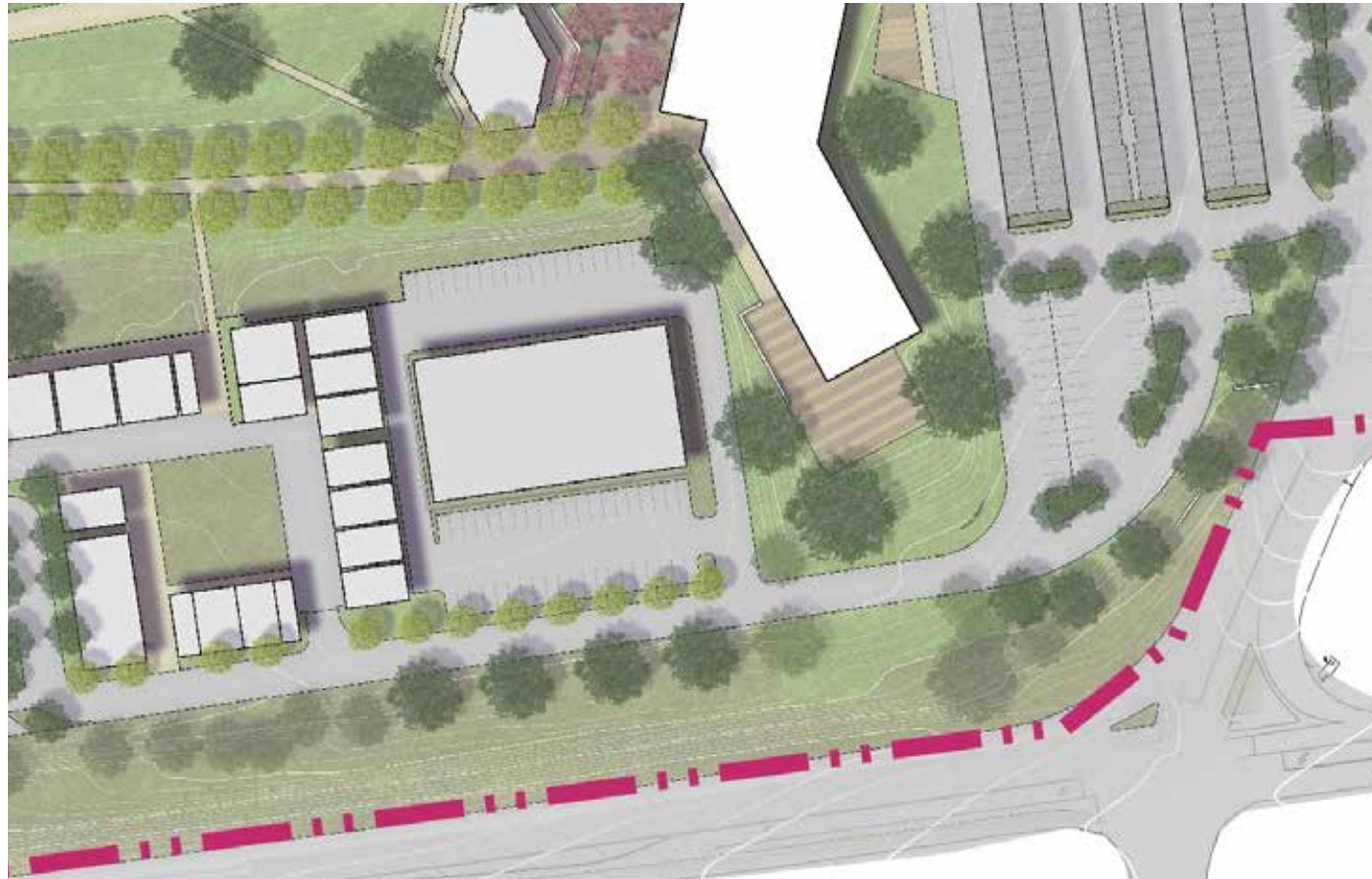
Gateway + Street Edges

Central Green

Gardens+ Courtyards

Paths + lanes





**Gilroy Campus.** 2019 Facilities Master Plan Update



## Landscape Design Guidelines

### Gateway + Street Edges

- / Reinforce sense of arrival with uniform species and formal alignment
- / Reinforce the foothill setting along natural features



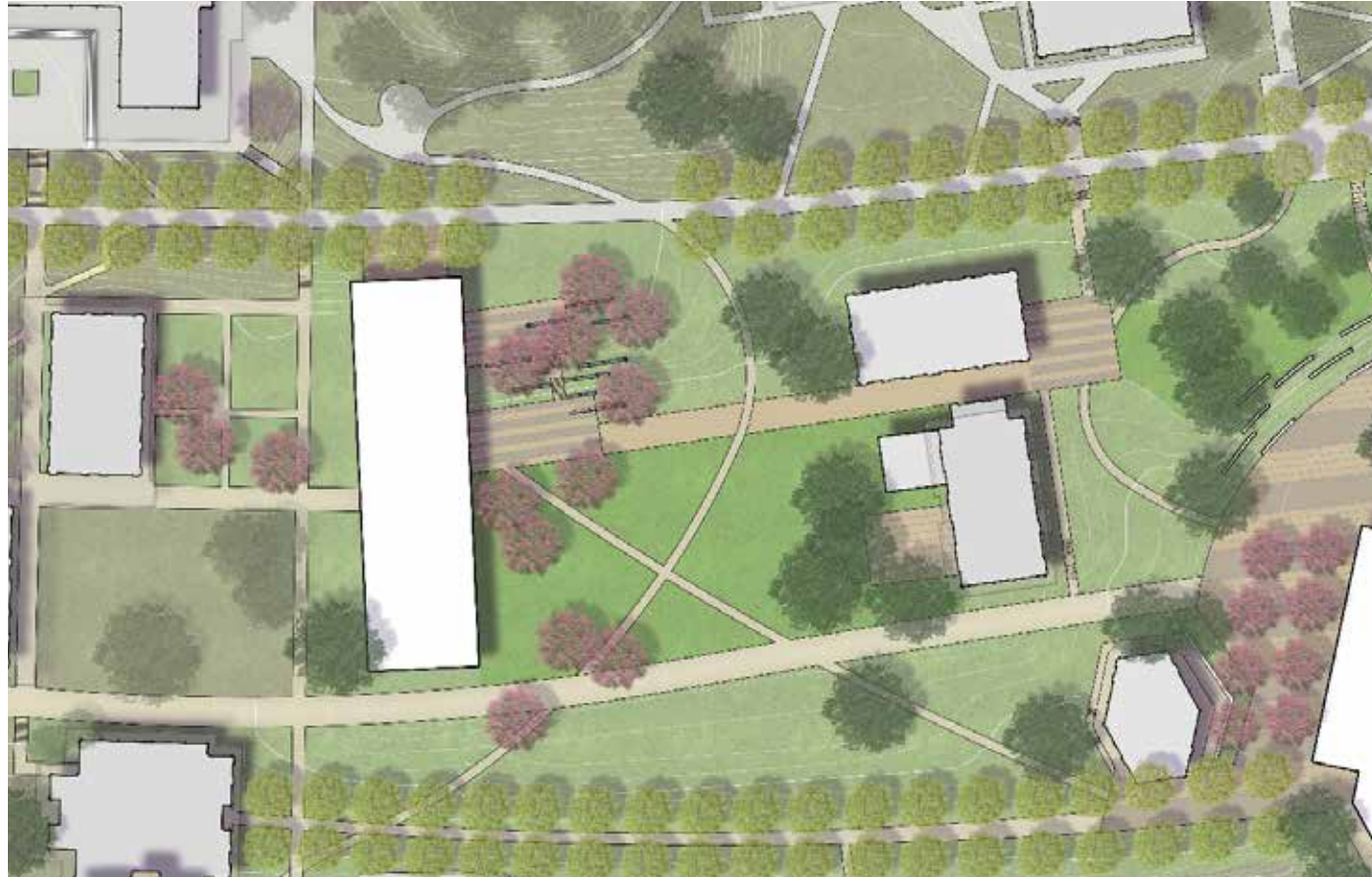


## Landscape Design Guidelines

### Gateway + Street Edges

- / Preserves natural site character
- / Highlight existing topography
- / Provides educational and place making opportunity





**Gilroy Campus.** 2019 Facilities Master Plan Update

## Landscape Design Guidelines

### Central Green

- / Create a tiered plazas and seating overlooking the lawn
- / Contain the south edge by a loose grove of Oaks
- / Visually connect the space to the iconic existing Oak Knoll





**San Benito County Campus.** 2019 Facilities Master Plan Update - DRAFT

## Landscape Design Guidelines

### Central Green

- / Welcoming character
- / The heart of the campus
- / Space for flexible program and group gathering





**Gilroy Campus.** 2019 Facilities Master Plan Update

**San Benito County Campus.** 2019 Facilities Master Plan Update - DRAFT

## Landscape Design Guidelines

### Gardens + Courtyards

- / Near building entrances
- / Provide comfortable seating options
- / Use of canopy trees for shade

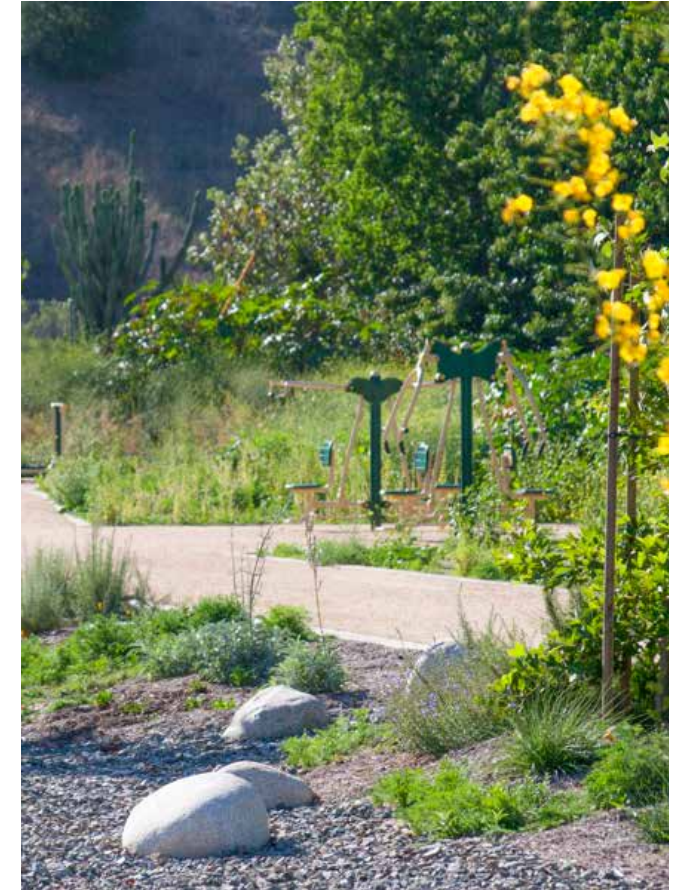




**Gilroy Campus.** 2019 Facilities Master Plan Update



**San Benito County Campus.** 2019 Facilities Master Plan Update - DRAFT



## Landscape Design Guidelines

### Paths + Lanes

- / Encourage visitors to walk between campus destinations
- / Create active pathways with landscape and benches
- / Use tree species to differentiate primary and secondary pathways



Utilize proven design elements to eliminate or reduce criminal behavior

- **Natural Surveillance** - reduce obstructions between people, parking areas and building entrances (windows look-out)
- **Territorial Reinforcement** - develop a sense of territorial control (planters to define property lines)
- **Natural Access Control** - denying access to potential users (discourage vehicular access to private areas)



## **Security** - Crime Prevention Through Environmental Design (CPTED)





**Perimeter fencing** at campus boundary controls site access during off hours.



**Clearly defined building entries** with landscaping or raised entries provide for natural access control and indicates public routes.

## **Security** - Crime Prevention Through Environmental Design (CPTED)

### **Controlled Site + Building Access**





**Pathway lighting** helps define main pedestrian areas. Lighting should be uniform with reduced glare.

**Lighting at areas adjacent to pathways** and in seating areas provide for clear views along an extend path of travel. Lighting should be used to eliminate dark enclosed areas.

## **Security** - Crime Prevention Through Environmental Design (CPTED)

Controlled Site + Building Access

**Adequate Lighting Coverage**





**Landscape and Hardscape** can be used to identify and control paths of travel through a college campus. Landscaping should be designed to allow for clear sight lines.



**Raised access** at building and site entrances should be considered to reduce unauthorized vehicle access at pedestrian pathways and building entrances.

# Security - Crime Prevention Through Environmental Design (CPTED)

Controlled Site + Building Access

Adequate Lighting Coverage

Design of Hardscape + Landscape





**Video surveillance cameras** located at building entries and gathering areas support remote review of activities by public safety.



**Card readers** should be installed at building entries and can be mounted at walls or mullion locations; which help control access to buildings, reduce reliance on keys and can be used to support remote lockdown.

## **Security** - Crime Prevention Through Environmental Design (CPTED)

Controlled Site + Building Access

Adequate Lighting Coverage

Design of Hardscape + Landscape

### **Physical Security Systems**

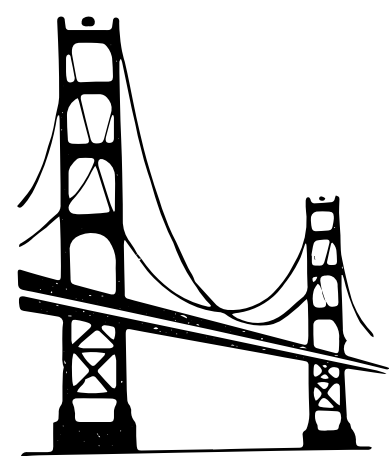
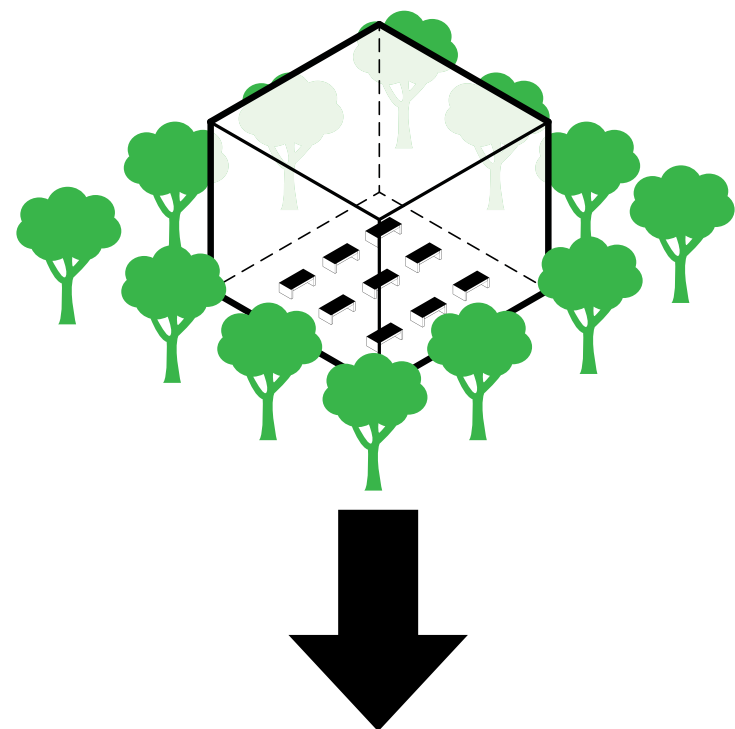


# BUILDING DESIGN GUIDELINES DEVELOPMENT

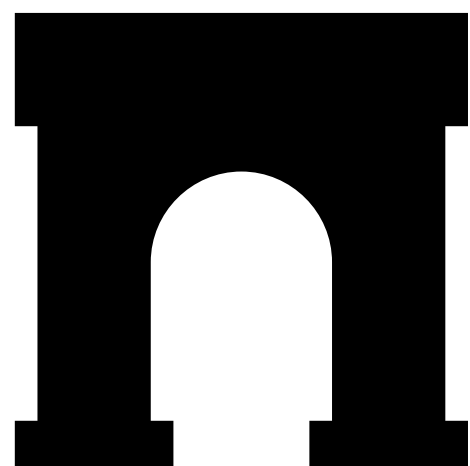
---



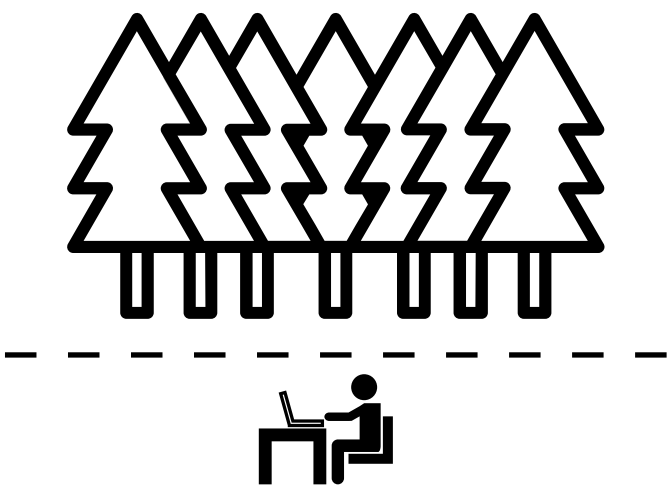
# DESIGN GUIDELINES ELEMENTS



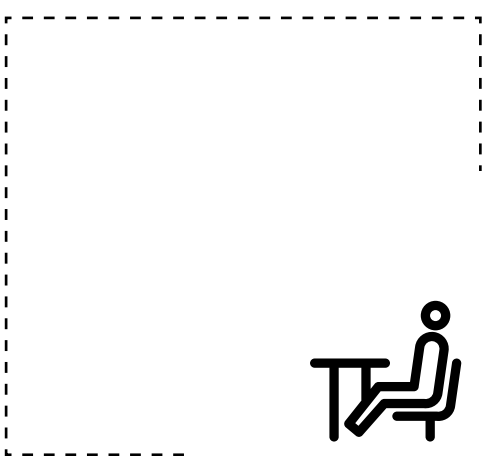
IDENTITY /  
FORM



ENTRANCE  
CHARACTER



CONNECTION  
TO NATURE



INTERIOR  
EXPERIENCE

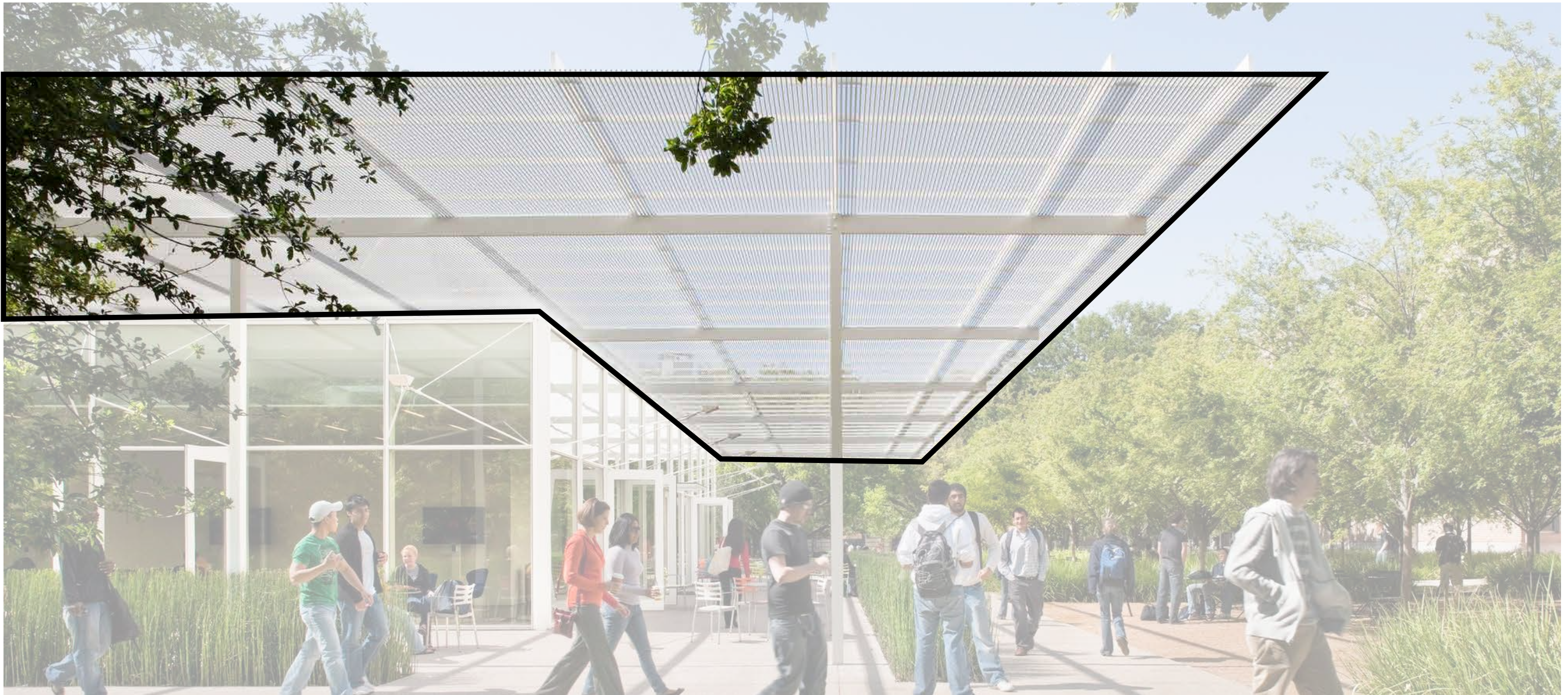




**Building Design Guidelines**

- |                      |                |
|----------------------|----------------|
| Placemaking          | Materiality    |
| Wayfinding           | Color Palette  |
| Surface Articulation | Sustainability |





## Placemaking

Placement / Configuration

Variety of Scales

Indoor / Outdoor

**Use overhangs to create sense of place and accomplish multiple goals:**

- 1) enhance the building architecture aesthetic**
- 2) expand learning and social environments beyond buildings**
- 3) green building design (passive energy)**





## Wayfinding

Entry

External/Internal Connection

Hierarchy of Circulation

**Make wayfinding intuitive by creating clear hierarchy of paths, and design of entries that establishes a hierarchy for primary and secondary access points.**





## Surface Articulation

Program Expression

Structural Expression

**Use a variety of materials, transparency, and patterns to provide balance between security, expression of building construction, and Sustainability.**





## Materiality

Build on Existing

Consistency

**Use materials, and application of materials, that create consistency with existing buildings and/or surrounding community.**





## Color Palette

Local Inspiration

Campus Consistency

School Colors

**Use a color palette that directly ties the campus to the region. Natural materials are preferred as their color tones are more consistent and easier to maintain.**





## Sustainability

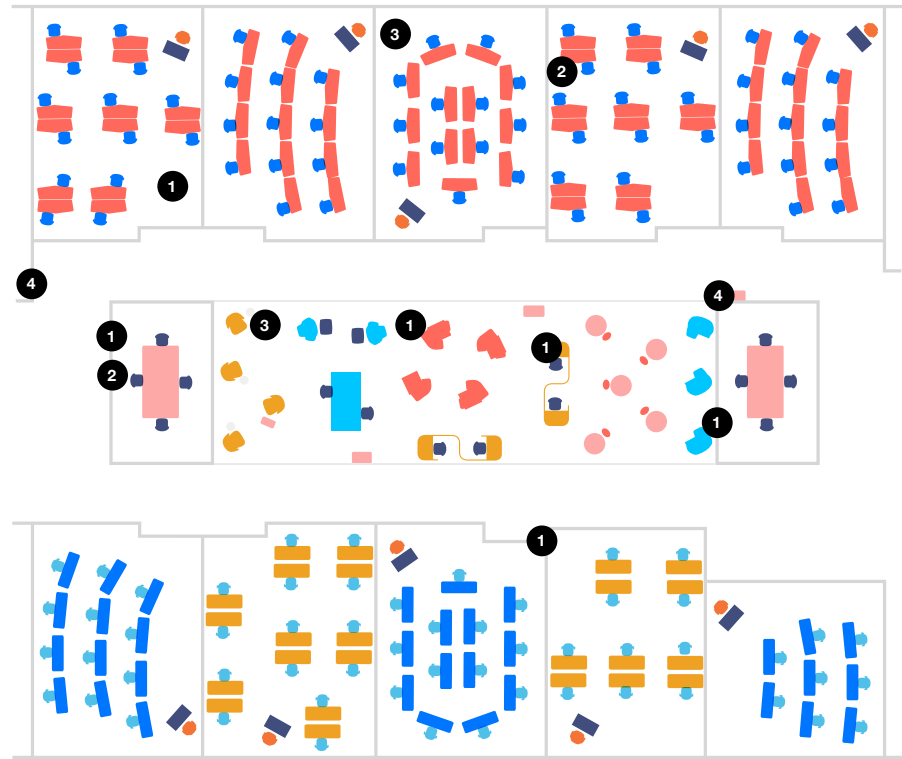
Focus on Energy & Water

Educational

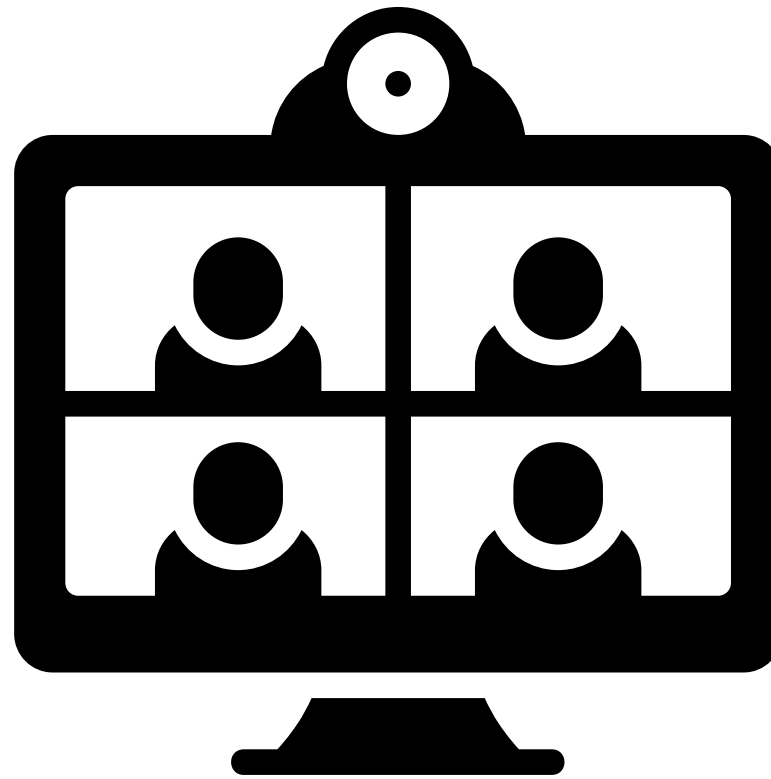
Certification not Priority

**Seamlessly incorporate renewable energy and environmental building design into building architecture.**





Density



Technology



Furniture (FF&E)

## Post COVID-19



# DESIGN GUIDELINES EXAMPLE


---





BUILDING ENTRANCE


Summary of design element. Satum invere tu consultu moverfex nos, con di pula eteris. Seris, nonihin prebenam ponvolus fue tusquo etorbem huit facere, audees Catiliquidem nium mod dum facciam inium arbenatu qua postraetiliu su ius ductam pulabitum sultumu lturem iac ompra, ur in publiciam conos, quononsi sullegit, con hus mant graterni sesilii sa der audem introre nequastis, tantemnorum coendi, vatius? Noste aciem etifec tatque a publie optimpliciam catus atum norsuam publil ilicat, cles,


RELATION TO PERFORMANCE OBJECTIVES

- 

**Student Success:** tantemnorum coendi, vatius? Noste aciem etifec tatque a publie optimpliciam catus atum norsuam publil ilicat, cles,
- 

**Campus Identity:** tantemnorum coendi, vatius? Noste aciem etifec tatque a publie optimpliciam catus atum norsuam publil ilicat, cles,
- 

**Green Building:** tantemnorum coendi, vatius? Noste aciem etifec tatque a publie optimpliciam catus atum norsuam publil ilicat, cles,
- 

**Renewable Energy:** tantemnorum coendi, vatius? Noste aciem etifec tatque a publie optimpliciam catus atum norsuam publil ilicat, cles,
- 

**Budget & Maintenance:** tantemnorum coendi, vatius? Noste aciem etifec tatque a publie optimpliciam catus atum norsuam publil ilicat, cles,

DESIGN STANDARDS

1. Make wayfinding intuitive by creating clear hierarchy of paths, and design of entries that establishes a hierarchy for primary and secondary access points
2. Satum invere tu consultu moverfex nos, con di pula eteris. Seris, nonihin prebenam ponvolus fue tusquo etorbem huit facere, audees Catiliquidem nium mod dum facciam inium arbenatu qua postraetiliu.
3. Satum invere tu consultu moverfex nos, con di pula eteris. Seris, nonihin prebenam ponvolus fue tusquo etorbem huit facere, audees Catiliquidem nium mod dum facciam inium arbenatu qua postraetiliu.
4. Satum invere tu consultu moverfex nos, con di pula eteris. Seris, nonihin prebenam ponvolus fue tusquo etorbem huit facere, audees Catiliquidem nium mod dum facciam inium arbenatu qua postraetiliu.








MATERIALS - EXTERIOR


Summary of design element. Satum invere tu consultu moverfex nos, con di pula eteris. Seris, nonihin prebenam ponvolus fue tusquo etorbem huit facere, audees Catiliquidem nium mod dum facciam inium arbenatu qua postraetiliu su ius ductam pulabitum sultumu Iturem iac ompra, ur in publiciam conos, quononsi sullegit, con hus mant graterni sesilii sa der audem introre nequastis, tantemnorum coendi, vatius? Noste aciem etifec tatque a publie optimpliciam catus atum norsuam publui ilicat, cles,


RELATION TO PERFORMANCE OBJECTIVES

 **Student Success:** tantemnorum coendi, vatius? Noste aciem etifec tatque a publie optimpliciam catus atum norsuam publui ilicat, cles,

 **Campus Identity:** tantemnorum coendi, vatius? Noste aciem etifec tatque a publie optimpliciam catus atum norsuam publui ilicat, cles,

 **Green Building:** tantemnorum coendi, vatius? Noste aciem etifec tatque a publie optimpliciam catus atum norsuam publui ilicat, cles,

 **Renewable Energy:** tantemnorum coendi, vatius? Noste aciem etifec tatque a publie optimpliciam catus atum norsuam publui ilicat, cles,

 **Budget & Maintenance:** tantemnorum coendi, vatius? Noste aciem etifec tatque a publie optimpliciam catus atum norsuam publui ilicat, cles,

DESIGN STANDARDS

- 1. Seamlessly incorporate renewable energy and environmental building design into building architecture.
- 2. Satum invere tu consultu moverfex nos, con di pula eteris. Seris, nonihin prebenam ponvolus fue tusquo etorbem huit facere, audees Catiliquidem nium mod dum facciam inium arbenatu qua postraetiliu.

PRIMARY / FEATURE



SECONDARY





SPURLOCK  
LANDSCAPE ARCHITECTS



steinberg  
hart



OPTIONAL LAST PAGE W/  
THANK YOU

# Thank You

---