

# **GAVILAN COLLEGE / SBCC CENTER**

CLIENT MEETING 3

03.12.2021

## CLIENT MEETING 3 | 03.12.2021

---

1. SCHEDULE
2. MEETING GOALS
3. GUIDING PRINCIPLES
4. WHERE WE LEFT OFF
5. OPTIONS
6. NEXT STEPS

# INTRO | SCHEDULE & MEETING GOALS

		2021												
		Week 1	Week 2	Week 3	Week 4	Week 5	Week 6	Week 7	Week 8	Week 9	Week 10	Week 11	Week 12	Week 13
Start Date	Feb 1	02/01-02/05	02/08-02/12	02/15-02/19	02/22-02/26	03/01-03/05	03/08-03/12	03/15-03/19	03/22-03/26	03/29-04/02	04/05-04/09	04/12-04/16	04/19-04/23	04/26-04/30
<b>MEETINGS ROLLUP</b>														
Steering Committee		●		●			●			●			●	
Focused Program Meetings														
Facilities / IT / M&O														
Community														
San Benito County Campus Task Force														
San Benito Ad Hoc Committee														
Board of Trustees														
<b>SCHEMATIC DESIGN</b>														
		1	2	3	4	5	6	7	8	9	10	11	12	
Conceptual Design / Programming				●										
Confirm OPR				●										
Building Program				●										
Site Program				●										
Conceptual Design Options				●										
Final Design Concept							●							
Building Locations							●							
Massing							●							
Conceptual Floor Plans							●							
Conceptual Site Plan							●							
Draft Schematic Design														
MEP Systems Criteria										●				
Structural System Selection										●				
Draft Floor Plan										●				
Draft Site Plan										●				
Draft Building Form										●				
Final Schematic Design													●	
Primary Materials													●	
MEP Equipment Sizing / Locations													●	
Basis of Design													●	
Final Floor Plan													●	
Final Site Plan													●	
Final Building Form													●	
<b>DESIGN DEVELOPMENT</b>														
Site														1

**TODAY'S MEETING GOAL**

- CONFIRM BUILDING ORGANIZATION

DISTRICT DESIGN GUIDELINES

**FOUNDATIONAL DESIGN OBJECTIVES:**

- SUSTAINABILITY
- EQUITY
- CAMPUS IDENTITY
- MAINTENANCE & SECURITY

PROJECT GUIDING PRINCIPLES:

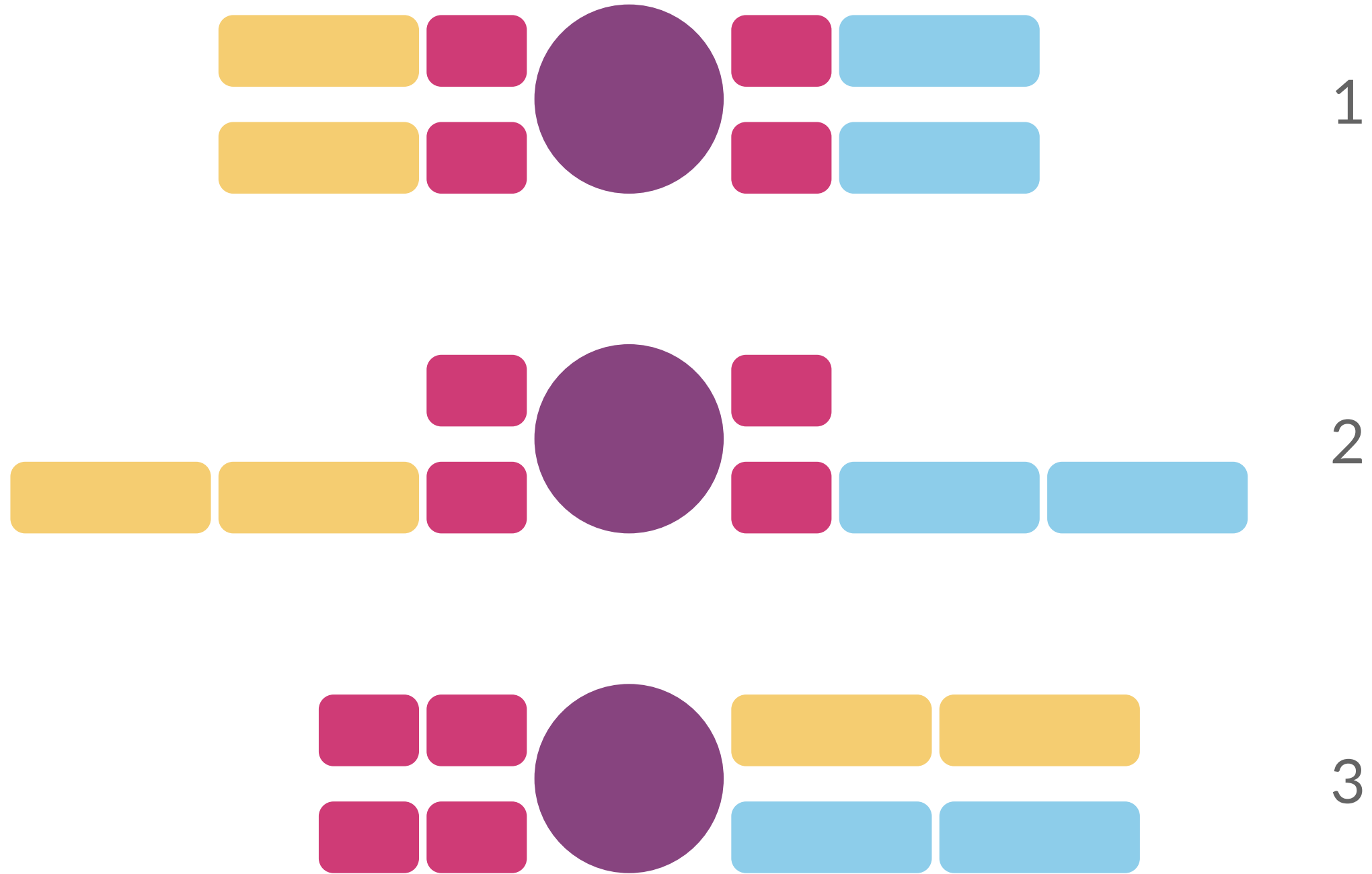
**THE SBCC CAMPUS WILL:**

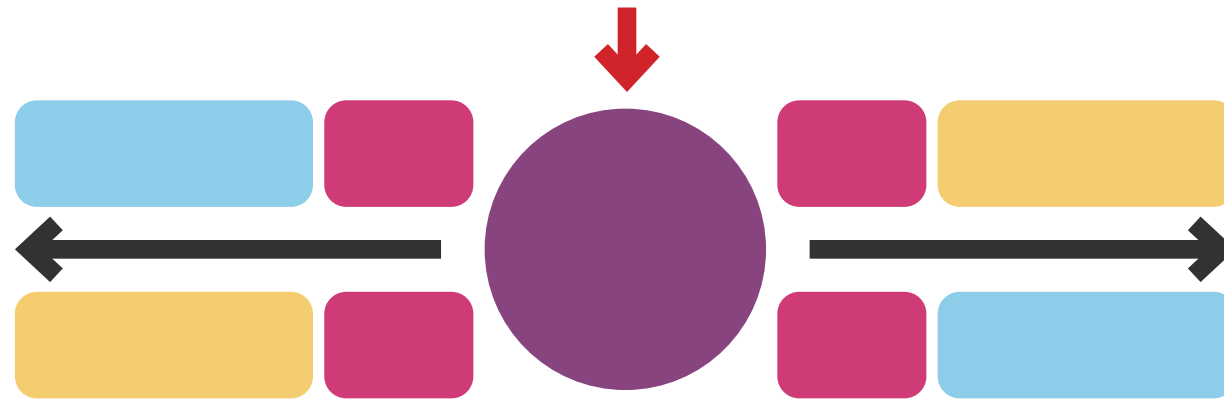
- WELCOME THE COMMUNITY
- CREATE AN EXCEPTIONAL AND COLLEGIATE STUDENT EXPERIENCE
- FACILITATE STUDENT CONNECTIONS TO SERVICES AND SUPPORT
- PROVIDE HIGHLY FUNCTIONAL, FLEXIBLE SPACES THAT ENCOURAGE LEARNING AND COLLABORATION
- PROMOTE WELLNESS AND SAFETY
- CONNECT AND INTERACT WITH THE LANDSCAPE
- BE DURABLE AND EASY TO MAINTAIN



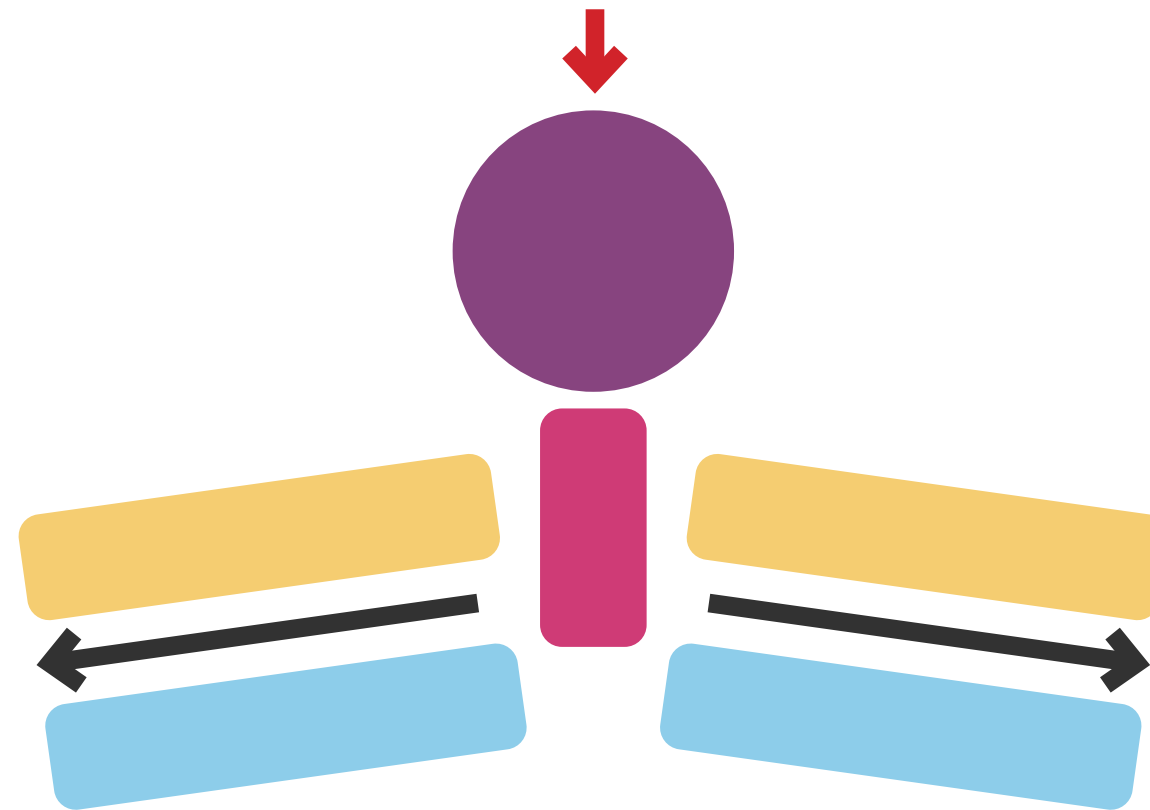
PROGRAMMING | PROGRAM LAYOUT DEVELOPMENT

- COMMUNITY
- STUDENT SERVICES
- SCIENCE
- GENERAL LECTURE





4



5

# OPTION 4

## OPEN PATH



# OPTION 4 | SITE PLAN



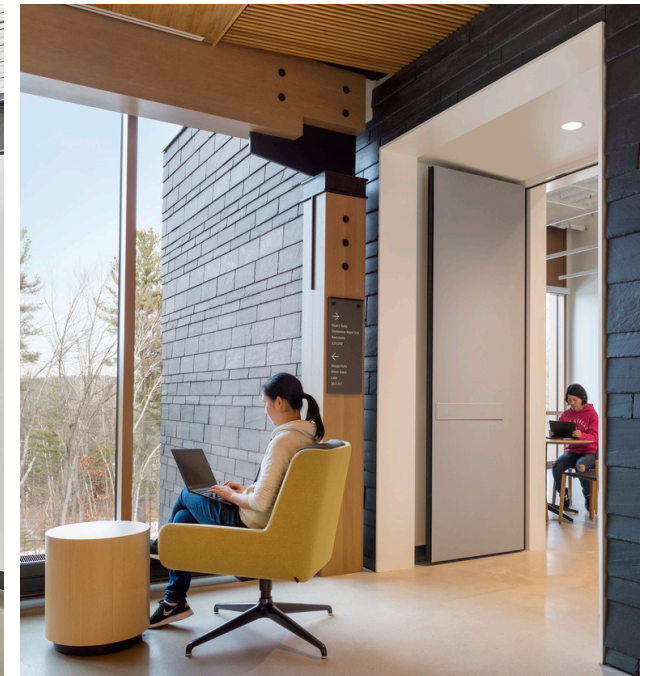
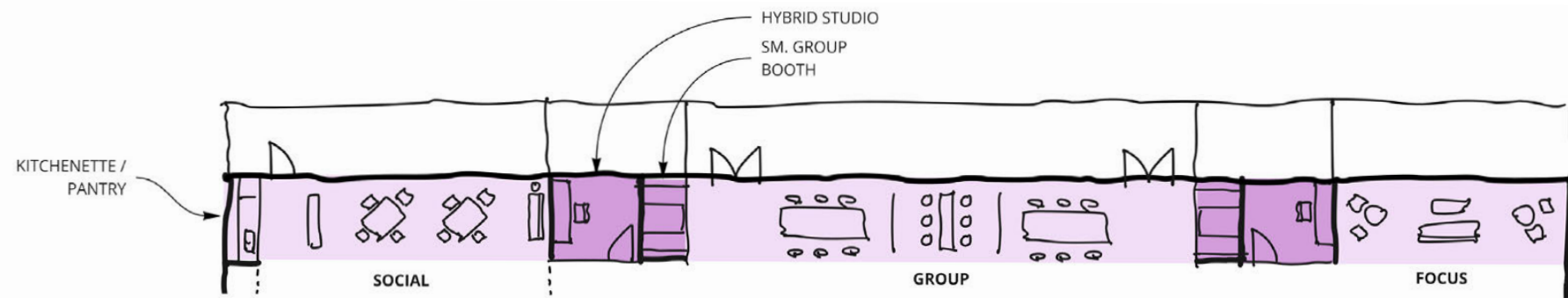
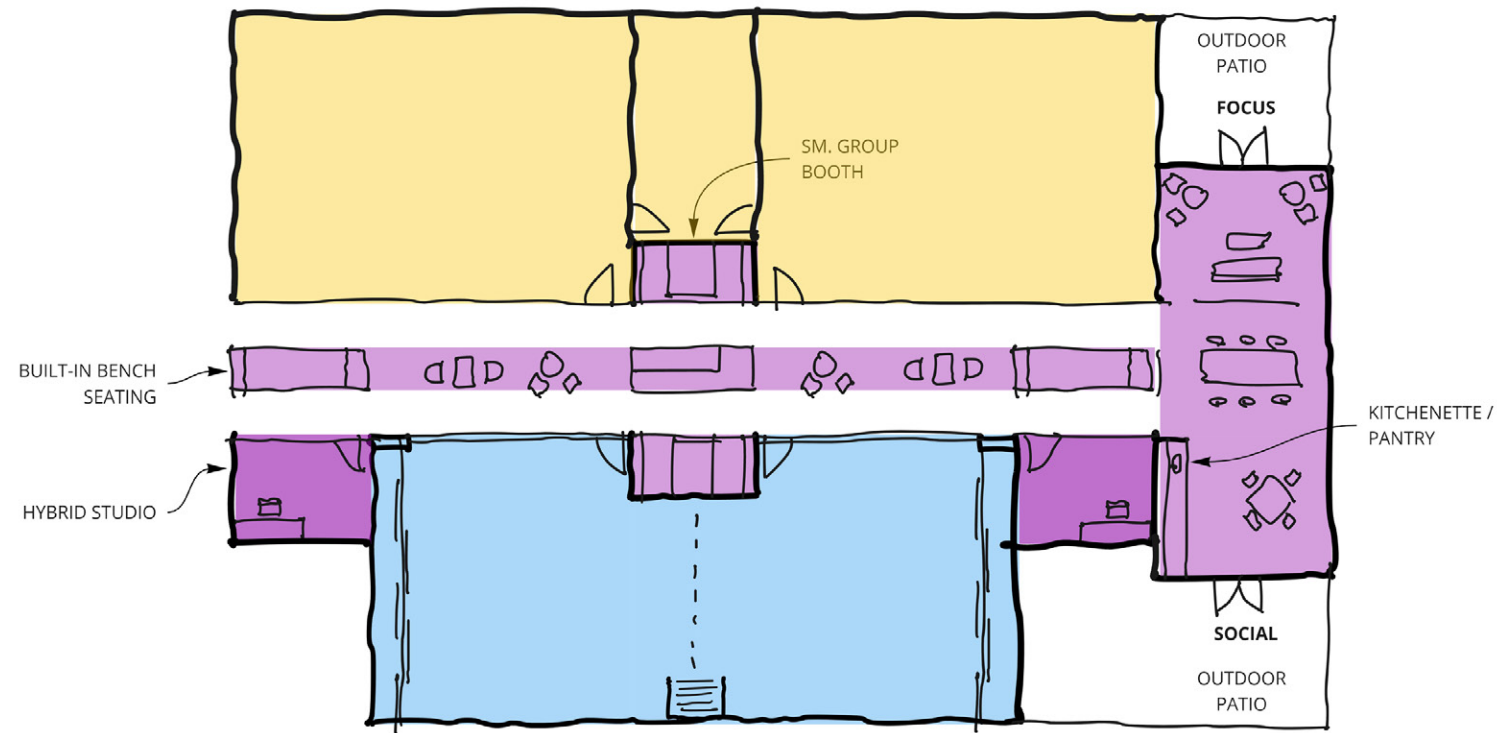


# OPTION 4 | PROGRAM LAYOUT

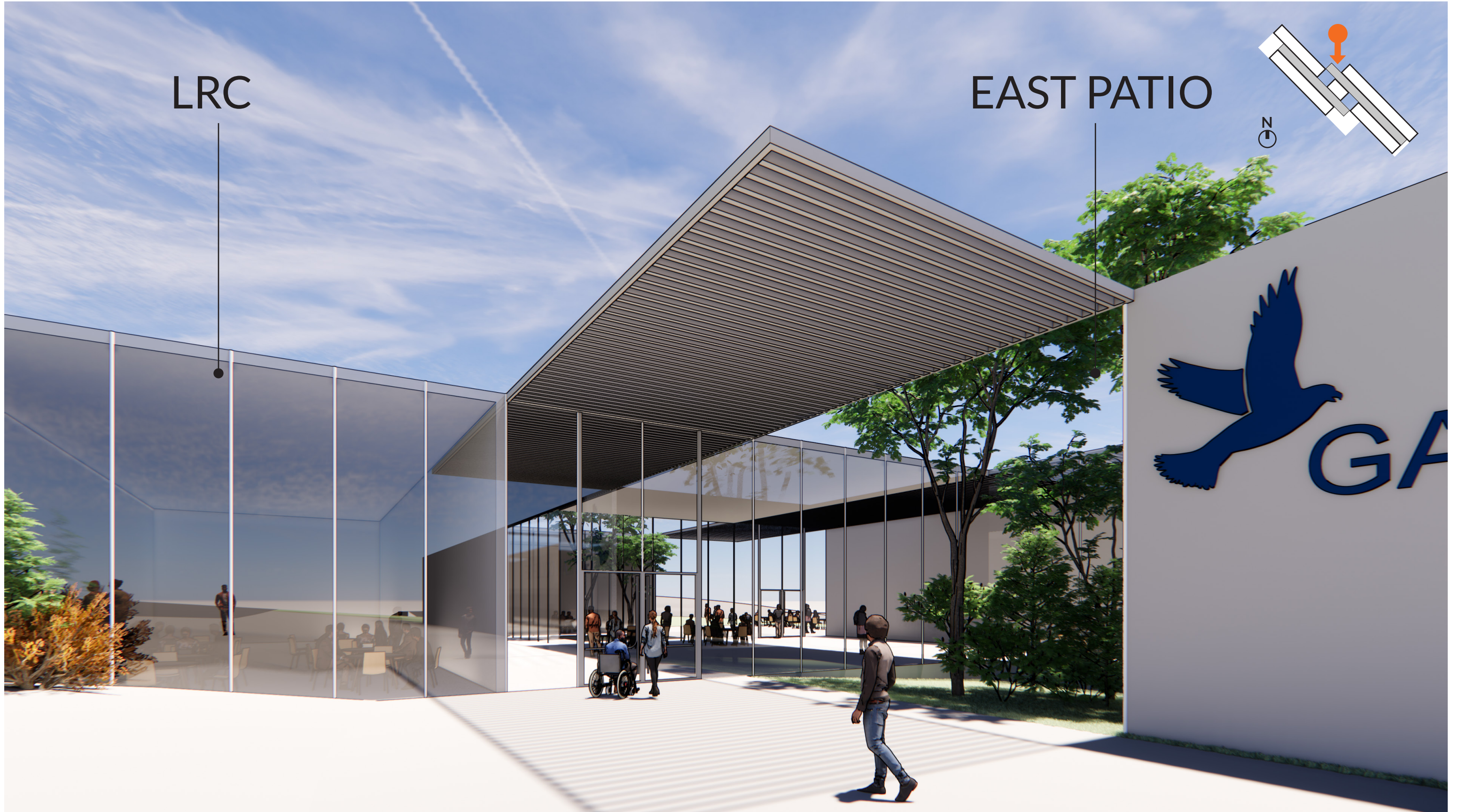




# OPTION 4 | COLLAB SPACE TYPOLOGIES



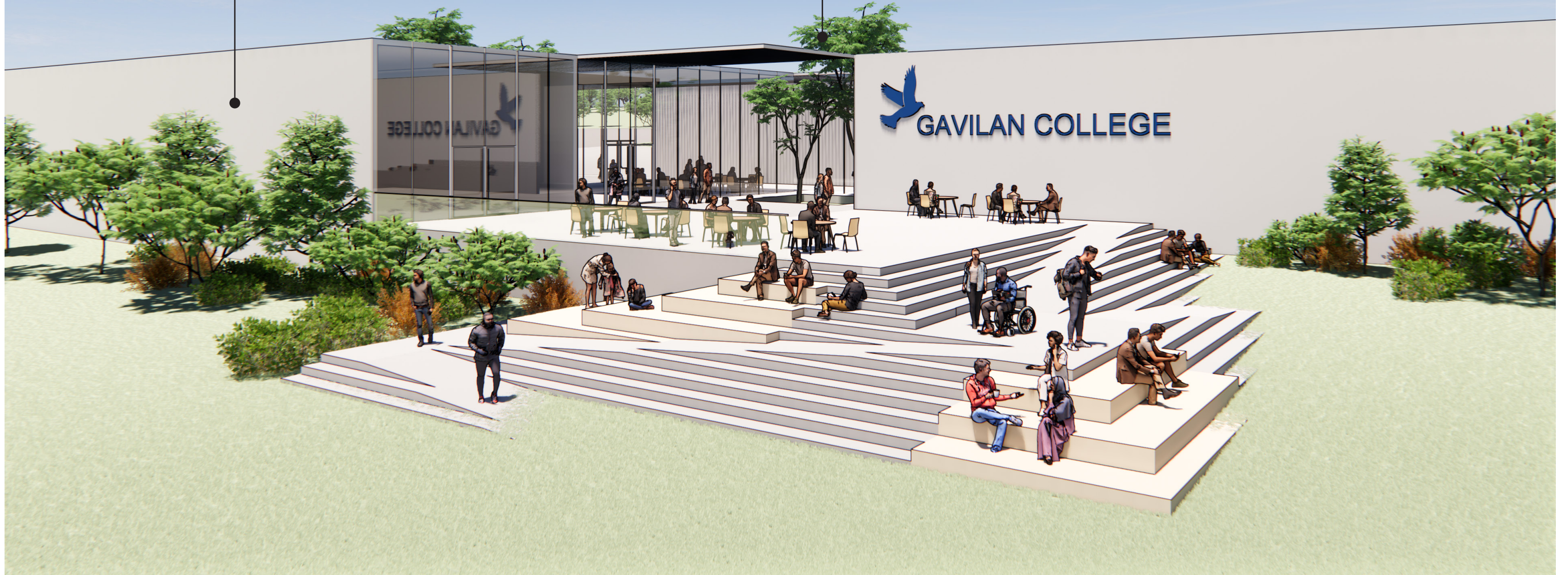
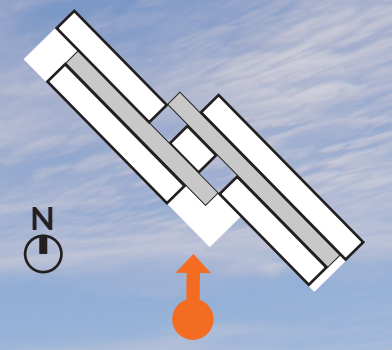






COMMUNITY ROOM

WEST PATIO





OPTION 4 | MASSING OVERVIEW



# OPTION 5

## GUIDED PATH



# OPTION 5 | SITE PLAN





# OPTION 5 | PROGRAM LAYOUT

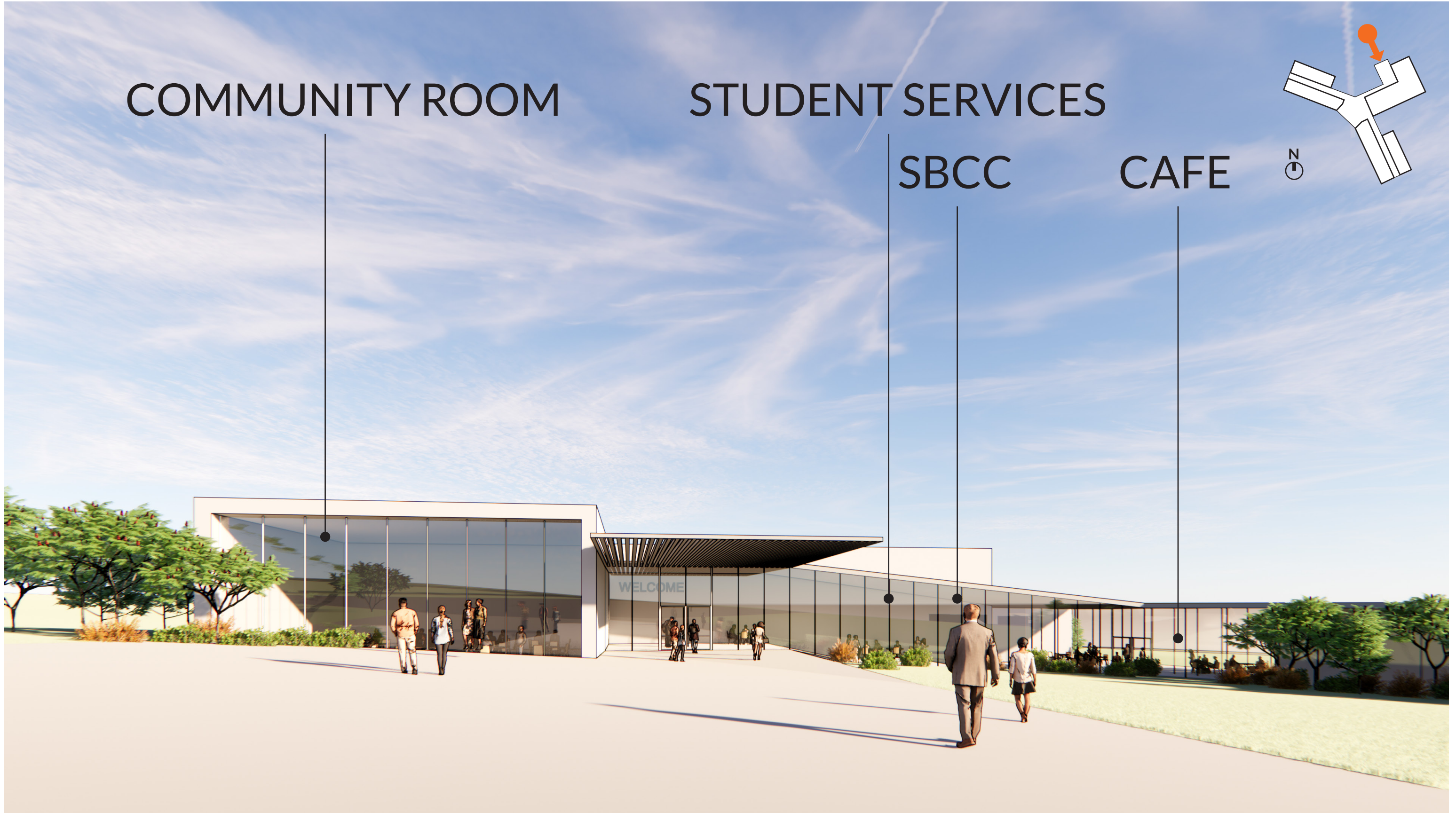


**KEY** Ⓝ

25' 50' 100' 200'

- SCIENCE
- GEN. ED.
- FACULTY OFFICES
- STUDENT SERVICES & SBCC
- COLLABORATIVE, CAFE & RECEPTION
- LRC & COMMUNITY
- COMPUTER LABS
- BACK-OF-HOUSE





COMMUNITY ROOM

STUDENT SERVICES

SBCC

CAFE

WELCOME







OPTION 5 | MASSING OVERVIEW

